

Significant Reduction of Radiation Exposure Using Specific Settings of the O-Arm for Percutaneous Cementoplasty in Accordance With the ALARA Principle

Marc Prod'homme, Didier Grasset, Alain Akiki, Lionel Helfer, Gilles Dietrich, Jonas Pierre Müller, Mattia Tomasoni, Mahmoud Sellami and Duccio Boscherini

Int J Spine Surg 2023, 17 (4) 534-541

doi: <https://doi.org/10.14444/8477>

<https://www.ijssurgery.com/content/17/4/534>

This information is current as of May 5, 2025.

Email Alerts Receive free email-alerts when new articles cite this article. Sign up at:
<http://ijssurgery.com/alerts>

Significant Reduction of Radiation Exposure Using Specific Settings of the O-Arm for Percutaneous Cementoplasty in Accordance With the ALARA Principle

MARC PROD'HOMME, MD^{1,2}; DIDIER GRASSET, MD¹; ALAIN AKIKI, MD²; LIONEL HELFER, MD²; GILLES DIETRICH, MD^{2,3}; JONAS PIERRE MÜLLER, MD²; MATTIA TOMASONI, PhD⁴; MAHMOUD SELLAMI, PhD⁴; AND DUCCIO BOSCHERINI, MD, PhD^{1,2}

¹Clinic La Source, Neuro Orthopedic Center, Lausanne, Switzerland; ²Orthopedic Surgery Department, Riviera-Chablais Hospital, Rennaz, Switzerland; ³Orthopedic Surgery Department, Lausanne University Hospital, Lausanne, Switzerland; ⁴Ophthalmology Department, Jules-Gonin University Eye Hospital, University of Lausanne, Lausanne, Switzerland

ABSTRACT

Background: Three-dimensional (3D) navigation has become routinely used in spine surgery, allowing more accurate and safe procedures. However, radiation exposure related to the use of imaging is an unresolved issue, and information about it is relatively scarce. The “as low as reasonably achievable” (ALARA) principle aims to reduce the radiation exposure for the patients as low as possible. The objective of this study was to compare the effective dose related to the use of the O-arm in standard settings with adapted features for dose reduction during percutaneous cementoplasty.

Methods: From March 2021 to October 2022, all consecutive patients who underwent navigated percutaneous cementoplasty with the use of the O-arm were prospectively included. Demographic, operative, irradiation, and radiological data were collected. The main outcome was the effective dose (E) in millisievert (mSv). Secondary outcomes were the absolute risk of cancer (AR) in percent equivalent to a whole-body exposition, operative time, and radiological results according to Garnier. In group A, patients were operated on with standard settings of the O-arm, whereas in group B, navigation on the field of view, collimation, and low-dose settings were used.

Results: A total of 70 patients were included in the study: 43 in group A and 27 in group B. Also, 109 vertebrae were operated: 59 in group A and 50 in group B. Mean E was significantly higher in group A than in group B (9.94 and 4.34 mSv, respectively; $P < 0.01$). The 3D-related E followed the same trend (7.82 and 3.97 mSv, respectively), as did 2-dimensional-related E (2.12 and 0.37 mSv, respectively; $P < 0.01$). Average AR was also significantly higher in group A than in group B ($5.10^{-4}\%$ and $2.10^{-4}\%$ respectively; $P < 0.01$). Operative time was similar in both groups, but the rate of satisfactory radiological results was higher in group A than in group B (95% and 84%, respectively; $P = 0.11$), and we found similar rates of cement leakage (22% and 24%, respectively; $P = 0.71$).

Conclusions: The application of settings of the O-arm in accordance with the ALARA principle helped to significantly reduce the radiation exposure and should be routinely used for O-arm-assisted cementoplasty procedures.

Clinical Relevance: This study details technical aspects and settings that may help users of the O-arm to decrease radiation exposure to patients and surgeons alike, especially in cementoplasty procedures, as well as in other procedures performed under O-arm guidance.

Level of Evidence: 2.

Minimally Invasive Surgery

Keywords: O-arm, vertebroplasty, kyphoplasty, radiation exposure, ALARA principle

INTRODUCTION

Vertebral compression fractures are common conditions, mostly related to high-energy accidents in young people and bone fragility in the elderly.¹ According to the degree of compression, gold standard treatment is cementoplasty, such as vertebroplasty or vertebral augmentation (balloon kyphoplasty,^{2,3} SpineJack,⁴ or stentoplasty⁵).

Three-dimensional (3D) navigation has become routinely used in spine surgery,⁶ allowing more accurate and safe procedures.⁷ However, radiation exposure related to the use of imaging is an unresolved issue,⁸ and information

about it is relatively scarce. The “as low as reasonably achievable” (ALARA) principle⁹ aims to reduce as low as possible the radiation exposure for the patient.^{10,11} Effective dose allows to estimate the radiation exposure and also the radiation-induced cancer risk⁸ related to the imaging using radiations. In our institution, we are used to perform cementoplasty under O-arm navigation (Medtronic, Minneapolis, MN, USA).^{12,13}

A previous study found a mean effective dose of 11.33 mSv during percutaneous cementoplasty using the O-arm in standard mode.¹² This result was almost 3

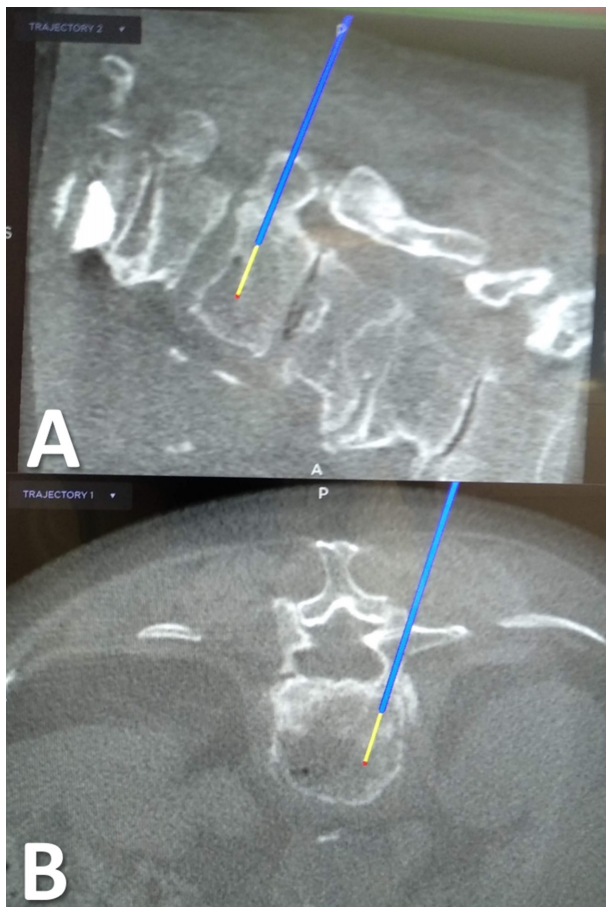


Figure 1. Intraoperative views of the 3D navigation on O-arm with the trajectory of the navigated Jamshidi needle. (A) Sagittal plane. (B) Axial plane.

times the 1-year natural irradiation received by people in Switzerland¹⁴ and 10 times the dose obtained with another imaging device named Surgivision¹² during similar procedures. Decreasing the dose in accordance with the ALARA principle⁹ appeared to be mandatory. The O-arm allows some features and settings such as low-definition scan, 2-dimensional (2D) field of view (FOV) navigation, and imaging collimation, leading to a potential reduction of radiation exposure.^{13,15}

The objective of the study was to compare the effective dose related to the use of the O-arm in standard mode with the use of the O-arm with adapted features for dose reduction in percutaneous navigated cementoplasty.

METHODS

Inclusion/Exclusion Criteria

All consecutive patients who underwent navigated percutaneous cementoplasty (Figure 1) on 1 or several vertebral levels for vertebral compression fracture from March 2021 to October 2022 were enrolled in the study.

Inclusion criteria were: (1) adult patients aged more than 18 years and (2) patients who underwent percutaneous cementoplasty with the use of the O-arm imaging system coupled with navigation. Exclusion criteria were (1) lack of information to calculate the radiation exposure; (2) vulnerable patients such as children, pregnant women, and patients unable to give consent; and (3) refusal to participate or lack of consent.

Study Design

Study design was prospective.

Ethical Statement

The study was performed in accordance with the Ethical Commission of the Vaud canton which allowed the research protocol (Nr. 2021–00298). All patients signed a written consent for participation in the study.

Interventions

All patients were operated on in prone position, under general anesthesia, and after antibiotic prophylaxis. O-arm 2D and 3D acquisitions could be performed under patient apnea, and the images transmitted to the Stealth navigation (Medtronic, Minneapolis, MN, USA) as a standard technique.¹² Then, a percutaneous cannulated navigated Jamshidi needle could be introduced inside the pedicle of the fractured vertebra, and cementoplasty performed under 2D imaging. The surgeon and other personnel carried a lead apron and a thyroid shield for radiation protection. According to a loss of height of the operated vertebra more than 20% and a local kyphosis more than 10°, balloon kyphoplasty was performed (Kyphon, Medtronic, Minneapolis, MN, USA) and then polymethyl methacrylate cement was injected in the vertebral body. In other cases, for both groups, polymethyl methacrylate cement was injected alone for standard vertebroplasty. X'Pede cement was used (Medtronic, Minneapolis, MN, USA).

Data Collection

Group A was defined as patients for whom the standard settings of the O-arm were used as currently performed for many years in our institution. Group B was defined as patients for whom the O-arm was used with standard 3D protocol but low-dose 2D imaging, collimation, and navigation through an FOV of 20 cm (Figure 2). The FOV navigation principle was obtained with the memorization of the first 2D acquisition and of the O-arm position, allowing the surgeon to navigate on the imaging without performing any new acquisition.

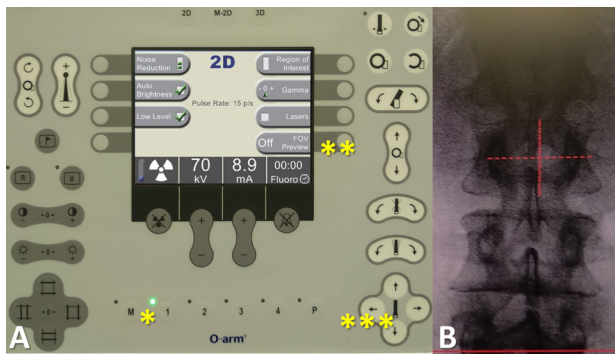


Figure 2. View of the control panel for settings of imaging acquisition. (A) First, an anteroposterior view can be taken. Then, the image and the O-arm position (*) are recorded. Second, the radiological technician can activate the navigation on the images by pressing the "FOV (field of view) Preview" button (**). Third, the radiological technician can navigate on the screen, using the position arrows of the control panel (**), especially in order to center the view on the fractured vertebra. (B) Finally, the lateral view is obtained and the height of the region of interest can be reached without another acquisition. Thus, a 3-dimensional navigated scan can be performed.

This process helped the surgeon to center the images on the targeted vertebra and to use collimation as well (Figure 3). O-arm settings in the groups are summarized in Table 1.

Demographic data were collected, such as age, gender, height in centimeters (cm), and weight in kilograms (kg). Operative time in minutes (min) from incision to closure was also recorded. Surgeon level was recorded, considering "senior" as a surgeon with more than 3 years of experience in spine surgery and "junior" as a surgeon with 3 or fewer years of experience.

Radiation exposure was studied by recording the dose length product (DLP) in milligray-centimeter (mGy-cm) related to 3D irradiation and the dose area product (DAP) in milligray-square centimeter (mGy-cm²) related to 2D, and were used to calculate the effective dose E in millisievert (mSv). E is the sum

Table 1. O-arm settings for 2D and 3D procedures.

O-arm Setting	Group A	Group B
2D Mode (pulses/s)	Fluorography (30)	Low dose (15)
Navigation on the FOV	No	Yes
Collimation	No	Yes
3D Mode	Standard	Standard or low dose

Abbreviations: 2D, 2-dimensional; 3D, 3-dimensional; FOV, field of view.

of irradiation related to 3D and 2D, as follows: $E_{3D} = DLP \times k$, with k as the conversion factor related to the irradiated region: $k = 0.015$ and 0.014 mSv/mGy-cm for the lumbar and thoracic regions, respectively.¹⁶ E_{2D} was calculated with the conversion factor w according to the European Commission as follows: $w = 0.26$ and 0.19 mSv/Gy-cm² for the lumbar and the thoracic regions, respectively,¹⁶ $E_{2D} = DAP \times w$. Absolute risk (AR) of radiation-induced cancer equivalent to a whole-body acquisition in % was also calculated, using the formula $AR = 5\%/Sv$.⁸ Image quality subjectively assessed by the surgeon was collected and considered to be sufficient or insufficient. Cement amount in cubic centimeter (cc) was recorded, and the volume by level calculated. Complications, especially cement leakage with its direction, were also recorded.

Outcomes

The main outcome was the overall E. E per operated level and E related to 2D and 3D were also compared as secondary outcomes. Other secondary outcomes were AR, operative time, amount of injected cement overall and by level, imaging duration, radiologic result according to the Garnier classification,¹⁷ cement leakage according to Lador¹⁸ et al, and other complications. In particular, satisfactory radiological results were defined

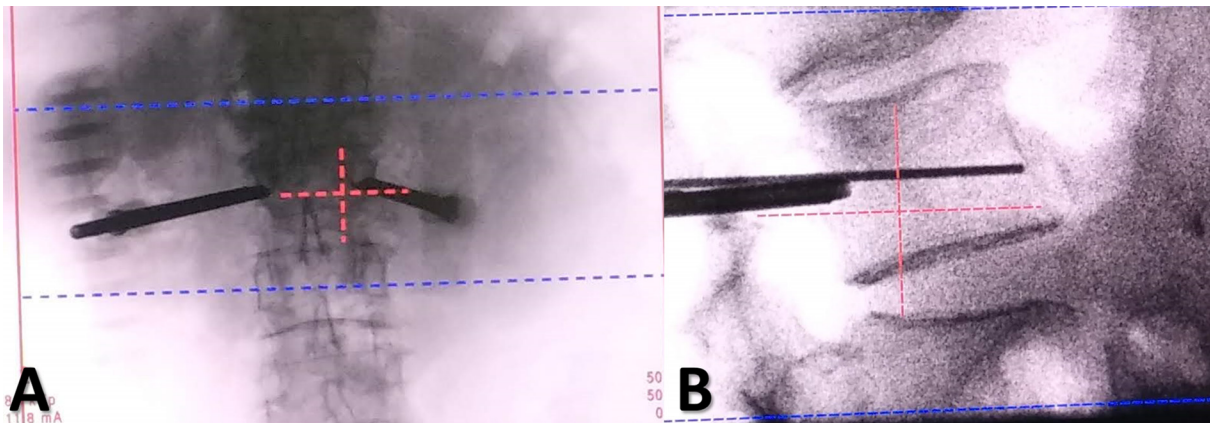


Figure 3. Intraoperative views of a cementoplasty procedure using the field of view (FOV) preview. (A) Anteroposterior view after placement of navigated Jamshidi needles in the fractured vertebra. (B) Lateral view. The region of interest may be reached with the FOV principle, allowing the fractured vertebra to be at the center of the image. Collimation can then be applied and also a zoom on the screen, to follow the cementoplasty procedure, and to decrease radiation exposure.

Table 2. Patient demographics and surgery data.

Patient Data	Group A (n = 43)	Group B (n = 27)	P Value
Sex ratio, female/male	25/18	19/8	0.32 ^a
Age, y, mean ± SD (range)	76 ± 11 (43–89)	67 ± 16 (34–96)	0.02 ^b
Body mass index, kg/m ² , mean ± SD (range)	25 ± 3 (19–30)	24 ± 5 (17–33)	0.46 ^b
Magerl classification, n (%)			0.61 ^a
A1	50 (85)	45 (90)	
A2	2 (3)	2 (4)	
A3	7 (12)	3 (6)	
Location of the fractures			0.08 ^a
Thoracic spine, n (%)	32 (54)	18 (36)	
Lumbar spine, n (%)	27 (46)	32 (64)	
Operative time, min, mean ± SD (range)	34.6 ± 14.3 (15–90)	41.9 ± 19.0 (12–90)	0.13 ^b
Operative time per level, min, mean ± SD (range)	27.3 ± 10.9 (15–60)	28.9 ± 13.4 (4.4–60)	0.74 ^b
Cemented vertebrae, n	59	50	
Vertebroplasties, n (%)	39 (66)	30 (60)	0.55 ^a
Kyphoplasties, n (%)	20 (34)	20 (40)	
Unipedicular approaches, n (%)	25 (42)	26 (52)	0.04 ^a
Surgeon experience, senior/junior	16/27	6/21	0.29 ^a
Cement volume injected, cc, mean ± SD (range)	6.8 ± 3.8 (2–18)	8.2 ± 3.5 (4–18)	0.13 ^b
Cement volume injected per level, cc, mean ± SD (range)	4.9 ± 1.5 (2–7)	5.3 ± 1.5 (2–8)	0.30 ^b

^aFisher exact test.^bStudent *t* test.

as Z3, Y3, and X3, whereas other results were mild or poor and considered to be not satisfactory.^{12,17}

Statistical Methods

Statistical analysis was performed with the R software version 3.1.3.¹⁹ Mean differences of numerical variables were compared using the Student *t* test. Correlation of Pearson and analysis of variance were used for association studies. A threshold of $P \leq 0.05$ was defined as statistically significant. The number needed to treat was calculated for a 1-mSv difference, a common SD of 5 mSv, an alpha risk of 5%, and a power of 90%. Calculation found a minimal number of 19 patients mandatory in each group.

RESULTS

Demographic Data

A total of 70 patients were included in the study: 43 in group A and 27 in group B. Also, 109 vertebral levels were cemented, including 59 in group A and 50 in group B. The 2 groups were similar in terms of gender, body mass index, number of operated levels, and Magerl classification, but age was significantly higher in group A than in group B ($P = 0.02$) (Table 2).

Operative Data

Operative time was similar in both groups, with 34.6 minutes for group A vs 41.9 minutes for group B ($P = 0.13$). The number of unipedicular approaches was 25 (42%) in group A vs 26 (52%) in group B ($P = 0.04$). Surgeon level was comparable between the groups ($P =$

0.29). Cement injection volumes were similar in both groups, with a mean of 6.8 cc in group A vs 8.2 cc in group B ($P = 0.13$). Similarly, the volume by level was 4.9 cc in group A and 5.3 cc in group B ($P = 0.30$). Operative data are detailed in Table 2.

Radiological Results

Radiological results according to the Garnier classification (Table 3) showed a better rate of satisfactory results in group A than in group, with 95% and 84%, respectively. Cement leakage rate was 22% and 24% for groups A and B respectively ($P = 0.62$), and no complication occurred for both groups (Table 3).

Radiation Exposure

Imaging duration was slightly higher in group A than in group B, with 23.67 and 17.82 seconds, respectively ($P = 0.06$), but the imaging duration by level was significantly higher in group A than in group B, with 18.56

Table 3. Garnier classification of vertebral filling and cement leakage.

Garnier Classification	Group A (n = 43)	Group B (n = 27)	P Value ^a
Cement filling n (%)			0.11
Satisfactory (Y3, Z2, Z3)	56 (95)	42 (84)	-
Acceptable (X2, X3, Y2)	2 (3)	1 (2)	-
Poor (X1, Y1, Z1)	1 (2)	7 (14)	-
Cement leakage, n			0.62
Spinal canal	2	1	-
Intravascular	2	1	-
Intradiscal	3	6	-
Paravertebral	6	4	-
Total, n (%)	13 (22)	12 (24)	-

^aFisher exact test.

Table 4. Radiation exposure data comparison in the 2 groups.

Radiation Exposure, mean \pm SD (range)	Group A (n = 43)	Group B (n = 27)	P Value ^a
2D Imaging duration, s	23.67 \pm 15.32 (9.70–84.87)	17.82 \pm 10.01 (2.82–46.07)	0.06
2D Imaging duration/level, s	18.56 \pm 10.40 (4.41–62.61)	12.93 \pm 8.49 (1.95–42.30)	0.02
Number of 3D acquisitions/patient	1.5 \pm 1.0 (1–5)	1.4 \pm 0.9 (1–4)	0.72
Dose length product, mGy·cm	534 \pm 385 (175–1975)	271 \pm 165 (88–769)	<0.01
Dose area product, mGy·cm ²	9173 \pm 10,430 (1298–63,331)	1614 \pm 1656 (332–9070)	<0.01
Overall E, mSv	9.94 \pm 6.67 (2.76–31.48)	4.34 \pm 2.52 (1.41–11.33)	<0.01
E per level, mSv	7.65 \pm 4.82 (1.39–19.69)	2.97 \pm 1.42 (0.49–5.67)	<0.01
E _{2D} , mSv	2.12 \pm 2.66 (0.25–16.47)	0.37 \pm 0.33 (0.06–1.72)	<0.01
E _{3D} , mSv	7.82 \pm 5.67 (2.46–29.63)	3.97 \pm 2.34 (1.23–10.77)	<0.01
E per 3D acquisition, mSv	5.60 \pm 3.14 (2.46–12.56)	2.90 \pm 0.80 (1.23–4.12)	<0.01
Absolute risk of radiation-induced cancer equivalent to a whole-body exposure, %	5.0 $\times 10^{-4}$ \pm 3.3 $\times 10^{-4}$ (1.4 $\times 10^{-4}$ –1.6 $\times 10^{-3}$)	2.2 $\times 10^{-4}$ \pm 1.3 $\times 10^{-4}$ (7.1 $\times 10^{-5}$ –5.7 $\times 10^{-4}$)	<0.01

Abbreviations: 2D, 2-dimensional; 3D, 3-dimensional; E, effective dose.

^aStudent *t* test.

and 12.93, respectively ($P = 0.02$). The number of 3D acquisitions per patient was similar in both groups (1.5 and 1.4, respectively; $P = 0.72$). E was significantly higher in group A than in group B, with 9.94 vs 4.34 mSv, respectively ($P < 0.01$). E per operated level was also significantly higher in group A than in group B, with a mean of 7.65 and 2.97 mSv, respectively ($P < 0.01$). E_{2D} showed an average of 2.12 mSv in group A and 0.37 mSv in group B, with a significant difference ($P < 0.01$). E_{3D} was also lower in group B, with a mean of 7.82 vs 3.97 mSv in groups A and B, respectively ($P < 0.01$). AR followed the same trend as E, with an average 5.10⁻⁴% for group A and 2.10⁻⁴% for group B ($P < 0.01$). Detailed irradiation data are summarized in Table 4.

Correlation Study

Correlation study in group A found a strong association between E and age, imaging duration, and surgeon level ($P < 0.01$). Similarly, group B had a strong association between E and operative time ($P = 0.01$), E_{2D} and imaging duration ($P < 0.01$). However, there was no association in group B between E and age ($P = 0.13$) and E and imaging duration ($P = 0.06$). For both groups, there was a strong association between E_{2D} and imaging duration as well as between surgeon level and operative time ($P < 0.01$). E_{2D} and surgeon level were strongly associated only in group A ($P < 0.01$). E and operative time were strongly associated only in group B ($P = 0.01$). Correlation study of the whole series only found a strong association between E or E_{2D} and imaging duration ($P < 0.01$ for both). The results of the complete correlation study are given in Table 5.

Image Quality

Image quality assessment (Table 6) found 100% of acceptable results in 3D in both groups and similar results in 2D in both groups without a significant difference ($P > 0.99$).

DISCUSSION

The most important finding in this study was the significant radiation exposure reduction, thanks to the application of the ALARA principle for percutaneous cementoplasty using the O-arm imaging device. Both overall E and E related to 2D and 3D imaging were reduced without significant loss of image quality and radiological results.

The first prospective series about O-arm kyphoplasty was performed by Schils on 16 cases.²⁰ He reported an operative time of 41 minutes (which was similar to group B), a fluoroscopy time of 3.2 minutes, and a fluoroscopy time per level of 2.4 minutes, almost 10 times higher than our results in both groups. The same author

Table 5. Correlation study: E, E_{2D}, and surgeon level with other outcomes.

Correlation	P Value		
	Group A (n = 43)	Group B (n = 27)	Overall (n = 70)
E and age ^a	<0.01	0.13	0.31
E and body mass index ^a	0.46	0.24	0.20
E and operative time ^a	0.28	0.01	0.43
E and imaging duration ^a	<0.01	0.06	<0.01
E _{2D} and imaging duration ^a	<0.01	<0.01	<0.01
E and cement amount ^a	0.13	0.40	0.41
E _{2D} and cement amount ^a	0.23	0.45	0.55
E and surgeon level ^b	0.75	0.72	0.70
E _{2D} and surgeon level ^b	0.71	0.14	0.45
Surgeon level and operative time ^b	0.74	0.61	0.41

Abbreviations: 2D, 2-dimensional; E, effective dose.

^aStudent *t* test.^bAnalysis of variance.

Table 6. Subjective image quality assessment.

Image Quality	Group A (n = 43)	Group B (n = 27)	P Value ^a
3 Dimensional			>0.99
Acceptable	43	27	-
Insufficient	0	0	-
2 Dimensional			>0.99
Acceptable	36	23	-
Insufficient	7	4	-

^aFisher exact test.

published about 54 cases²¹ and found an operative time of 38 minutes, which was close to our results, a fluoroscopy time of 3.1 minutes, and a fluoroscopy time per level of 2.5 minutes, almost 10 times higher than our results in both groups as well. This may be explained by the learning curve, considering the study at the beginning of Schils' experience in O-arm cementoplasty.

Significant reduction of 2D imaging duration per level in group B may be explained by the use of navigation on images, which allowed more accurate placement of the O-arm without performing new acquisition in this aim, the cross was centered on the targeted vertebra by the radiology technician using the O-arm direction commands. On the contrary, in group A, the surgeon was compelled to reach the position of the targeted vertebra with additional acquisitions, leading to higher imaging duration for each level and higher radiation exposure accordingly. Collimation used in group B also helped to reduce the field of irradiation and then the overall 2D dose.²²

Significant reduction of 3D irradiation was only explained by the systematic choice of standard or low-dose protocols and to draw attention on other parameters according to the patients' body mass index. Rousseau et al published a dosimetric study comparing radiation exposure generated by the O-arm at the lowest irradiation mode in comparison with the Surgivisio device.¹⁵ They found a mean E_{3D} of 2.41 mSv, a third lower than the results of group B, and an average E_{2D} of 1.54 mSv, respectively, close to the results of group A, but almost 7 times higher than the results in group B. Collimation was the explanation of such difference.

Wojdyn et al published radiation exposure of 29 patients (44 vertebrae) operated on for percutaneous navigated vertebroplasty under O-arm²³ and found a mean DAP of 9120 mGy·cm², for thoracic vertebrae: 5281.4 mGy·cm², 47.73% of cases and for lumbar vertebrae: 6680.6 mGy·cm², 52.28% of cases. The calculation of effective dose using the conversion factors¹⁶ found a mean E_{2D} of 1.39 mSv, among them 1.00 mSv for thoracic vertebrae and 1.74 mSv for lumbar

vertebrae. These results were inferior to those of group A but almost 3.5 times higher than those of group B.

As not all facilities throughout the world have an O-arm device available, radiation exposure related to 2D fluoroscopic device use for 1-level percutaneous vertebroplasty was also compared. Boszyk et al published a study about 60 percutaneous kyphoplasty procedures²⁴ under fluoroscopic guidance and found a mean effective dose of 4.28 mSv, which was similar to the results of group B. Li et al published a comparison series about 1-fluoroscopic vs 2-fluoroscopic devices,²⁵ using dosimeters for effective dose measurement. The mean radiation dose to the patient was 1.97 mSv for the 1-fluoroscopic technique group, less than half of group B results, and 0.95 mSv for the 2-fluoroscopic technique group. The mean radiation dose to the surgeon, which can be assimilated to E_{2D} of the current series, was 0.27 mSv for the 1-fluoroscopic technique group and 0.25 mSv for the 2-fluoroscopic technique group, which were similar to the results of group B. The operative time was significantly different between groups: 47.15 minutes for the 1-fluoroscopic technique group vs 36.62 minutes for the 2-fluoroscopic technique group, which was comparable with groups B and A, respectively. So, the authors recommended using 2 fluoroscopic devices to decrease radiation exposure and operative time. Wojdyn et al²³ compared O-arm with C-arm for percutaneous vertebroplasty. They found for the C-arm use a mean DAP of 16677 mGy·cm² for thoracic vertebrae (leading to an E_{2D} of 3.17 mSv¹⁶) and for lumbar vertebrae a mean DAP of 14202 mGy·cm² (leading to an E_{2D} of 3.69 mSv¹⁶). These results are 50% higher than in group A and almost 10-fold higher than in group B.

Cumulative natural irradiation in Switzerland during a year is estimated to be 4.30 mSv,¹⁴ which is similar to the results of group B but less than half of group A.

Similar rates of cement leakage in the groups may indicate that the decrease of image quality in 2D in group B did not affect accuracy and safety of the procedure, especially in consideration of the similar rates of kyphoplasties. This observation can be put in perspective that there was no correlation between surgeon level and radiation exposure or even operative time. This point illustrates the ergonomics of 3D navigation to help standardize the cementoplasty procedure for junior surgeons.

The current study has several limitations. First, the sample of patients was short, although the number needed to treat was reached for both groups. Second, the accuracy of effective dose calculation may have been

altered because it represents an estimation, obtained with standard conversion factors,¹⁶ considering the use of PCXMC software^{26–28} which is a more accurate calculation through a Monte Carlo simulation.⁸ Collimation used in group B avoided the ability to estimate the radiation exposure as it was impossible to know the exact dimensions of the irradiation field required in PCXMC for dose calculation. However, we opted for the use of conversion factors because a previous study on irradiations with the O-arm found no significant differences between E_{2D} calculated with the conversion factors and with PCXMC.¹² For comparative purposes, the calculation was performed similarly in both groups.

CONCLUSION

The application of settings of the O-arm in accordance with the ALARA principle allowed a significant reduction of radiation exposure for both patients and surgeons. Image quality was also decreased but did not compromise the radiological results. Using the low-dose settings, navigation on the FOV and collimation should be always performed for percutaneous cementoplasty under O-arm for dose reduction.

REFERENCES

1. Taylor RS, Taylor RJ, Fritzell P. Balloon Kyphoplasty and Vertebroplasty for vertebral compression fractures. *Spine*. 2006;31(23):2747–2755. doi:10.1097/01.brs.0000244639.71656.7d
2. Muto M, Guarnieri G, Giurazza F, Manfrè L. What's new in vertebral Cementoplasty. *Br J Radiol*. 2016;89(1059):20150337. doi:10.1259/bjr.20150337
3. Zhu Y, Cheng J, Yin J, Zhang Z, Liu C, Hao D. Therapeutic effect of kyphoplasty and balloon vertebroplasty on osteoporotic vertebral compression fracture. *Medicine (Baltimore)*. 2019;98(45):45. doi:10.1097/MD.00000000000017810
4. Kerschbaumer G, Gaulin B, Ruatti S, Tonetti J, Boudissa M. Clinical and radiological outcomes in thoracolumbar fractures using the spinejack device. A prospective study of seventy-four patients with a two point three year mean of follow-up. *Int Orthop*. 2019;43(12):2773–2779. doi:10.1007/s00264-019-04391-1
5. Martín-López JE, Pavón-Gómez MJ, Romero-Tabares A, Molina-López T. Stentoplasty effectiveness and safety for the treatment of osteoporotic vertebral fractures: A systematic review. *Orthop Traumatol Surg Res*. 2015;101(5):627–632. doi:10.1016/j.otsr.2015.06.002
6. Farah K, Coudert P, Graillon T, et al. Prospective comparative study in spine surgery between O-arm and Airo systems: efficacy and radiation exposure. *World Neurosurgery*. 2018;118:e175–e184. doi:10.1016/j.wneu.2018.06.148
7. Laine T, Lund T, Ylikoski M, Lohikoski J, Schlenzka D. Accuracy of pedicle screw insertion with and without computer assistance: a randomised controlled clinical study in 100 consecutive patients. *Eur Spine J*. 2000;9(3):235–240. doi:10.1007/s005860000146
8. Wambersie A. The international commission on radiation units and measurements. *J ICRU*. 2005;5(2):ii–iii. doi:10.1093/jicru/ndi017
9. National Council on Radiation Protection and Measurements. *Report No. 107. Implementation of the Principle of as Low as Reasonably Achievable (ALARA) for Medical and Dental Personnel* [NCRP Publications]. 1990.
10. Hendee WR, Edwards FM. ALARA and an integrated approach to radiation protection. *Semin Nucl Med*. 1986;16(2):142–150. doi:10.1016/s0001-2998(86)80027-7
11. Bevelacqua JJ. Practical and effective ALARA. *Health Phys*. 2010;98 Suppl 2:S39–47. doi:10.1097/HP.0b013e3181d18d63
12. Prod'homme M, Tonetti J, Boscherini D, et al. Navigated cementoplasty with O-arm and surgivisio: an ambispective comparison with radiation exposure. *Int J Spine Surg*. 2022;16(5):944–952. doi:10.14444/8348
13. Medtronic. *O-Arm User Manual*, MN. <https://www.medtronic.com/us-en/healthcare-professionals/products/neurological/surgical-imaging-systems/o-arm.html>. Accessed October 6, 2022.
14. No authors listed. *Office Fédéral de La Santé Publique, 2016, Forum Nucléaire*. https://www.ensi.ch/wp-content/uploads/sites/4/2017/06/ENSI_Strahlenschutzbericht_2016_AN-10020_WEB-2.pdf. Accessed October 6, 2022.
15. Rousseau J, Dreuil S, Bassinet C, Cao S, Elleaume H. Surgivisio® and O-arm®O2 cone beam CT mobile systems for guidance of lumbar spine surgery: comparison of patient radiation dose. *Phys Med*. 2021;85:192–199. doi:10.1016/j.ejmp.2021.04.018
16. European Commission. Radiation induced long-term health effects after medical exposure. *EU Scientific Seminar*. 2013. https://ec.europa.eu/energy/sites/ener/files/documents/seminar_proceedings_radiation_protection_series_ndeg_rp182.pdf. Accessed October 6, 2022.
17. Garnier L, Tonetti J, Bodin A, et al. Kyphoplasty versus vertebroplasty in osteoporotic thoracolumbar spine fractures. Short-term retrospective review of a multicentre cohort of 127 consecutive patients. *Orthop Traumatol Surg Res*. 2012;98(6 Suppl):S112–S119. doi:10.1016/j.otsr.2012.03.018
18. Lador R, Dreiangel N, Ben-Galim PJ, Hipp JA. A pictorial classification atlas of cement extravasation with vertebral augmentation. *Spine J*. 2010;10(12):1118–1127. doi:10.1016/j.spinee.2010.09.020
19. R Core Team. *R: A Language and Environment for Statistical Computing*. R Foundation for Statistical Computing. Vienna, Austria. 2014. <http://www.R-project.org/>. Accessed October 6, 2022.
20. Schils F. O-arm guided balloon kyphoplasty: preliminary experience of 16 consecutive patients. *Acta Neurochir Suppl*. 2011;109:175–178. doi:10.1007/978-3-211-99651-5_27
21. Schils F. O-arm-guided balloon kyphoplasty: prospective single-center case series of 54 consecutive patients. *Neurosurgery*. 2011;68(2 Suppl):s250–6. doi:10.1227/NEU.0b013e31821421b9
22. National Research Council. Health risks from exposure to low levels of ionizing radiation: BEIR VII phase 2. National Academies Press. 2006.
23. Wojdyn M, Pierzak O, Zapałowicz K, Radek M. Use of O-arm with neuronavigation in percutaneous vertebroplasty reduces the surgeon's exposure to intraoperative radiation. *Arch Med Sci*. 2021;17(1):113–119. doi:10.5114/aoms.2019.84269

24. Boszczyk BM, Bierschneider M, Panzer S, et al. Fluoroscopic radiation exposure of the Kyphoplasty patient. *Eur Spine J*. 2006;15(3):347–355. doi:10.1007/s00586-005-0952-0

25. Li YY, Huang TJ, Cheng CC, Wu MH, Lee CY. Comparing radiation exposure during percutaneous vertebroplasty using one- vs two-fluoroscopic technique. *BMC Musculoskelet Disord*. 2013;14(1). doi:10.1186/1471-2474-14-38

26. Servomaa A, Tapiovaara M. Organ dose calculation in medical x ray examinations by the program PCXMC. *Radiation Protection Dosimetry*. 1998;80(1):213–219. doi:10.1093/oxford-journals.rpd.a032509

27. Tapiovaara MJ, Lakkisto M, Servomaa A. PCXMC: a PC-based Monte Carlo program for calculating patient doses in medical X-ray examinations. Helsinki, Finland: STUK; 1997.

28. Prod'homme M, Docquier P-L, Miri O, et al. Irradiation level related to intraoperative imaging device in paediatric elastic stable Intramedullary nailing: preliminary prospective study on 51 patients using PCXMC software. *J Child Orthop*. 2020;14(5):451–458. doi:10.1302/1863-2548.14.200127

Funding: This study was supported by the Swiss Personalized Health Network (2018DRI13 to Thomas J. Wolfensberger).

Disclosures: Duccio Boscherini discloses that he was on the speakers bureau for Medtronic, a company involved in the manufacture of a device examined in this study, and he still remains a non-remunerated consultant. He was also on the speakers bureau for the Johnson

& Johnson Company and received consulting fees. The remaining authors have nothing to disclose.

Patient consent for publication: Patient's anonymity was protected and all patients signed an informed written consent for enrollment in this study.

Ethics Approval: The procedures followed were in accordance with the ethical standards of the responsible committees on human experimentation (institutional and national) and with the Helsinki Declaration of 1975, as revised in 2000. The ethical commission on human research of the Vaud canton approved the research protocol (No. 2021-00298).

Corresponding Author: Marc Prod'homme, Clinic La Source, Neuro Orthopedic Center, Avenue Jomini 8, CH-1004 Lausanne, Switzerland; marcprod86@gmail.com

Published 29 May 2023

This manuscript is generously published free of charge by ISASS, the International Society for the Advancement of Spine Surgery. Copyright © 2023 ISASS. To see more or order reprints or permissions, see <http://ijssurgery.com>.