

## Suboptimal Age-Adjusted Lumbo-Pelvic Mismatch Predicts Negative Cervical-Thoracic Compensation in Obese Patients

Samantha R. Horn, Cole A. Bortz, Subaraman Ramachandran, Gregory W. Poorman, Frank Segreto, Matt Siow, Akhila Sure, Dennis Vasquez-Montes, Bassel Diebo, Jared Tishelman, John Moon, Peter Zhou, Bryan Beaubrun, Shaleen Vira, Cyrus Jalai, Charles Wang, Kartik Shenoy, Omar Behery, Thomas Errico, Virginie Lafage, Aaron Buckland and Peter G. Passias

*Int J Spine Surg* published online 9 July 2019  
<https://www.ijssurgery.com/content/early/2019/07/09/6034>

This information is current as of May 17, 2025.

---

**Email Alerts** Receive free email-alerts when new articles cite this article. Sign up at:  
<http://ijssurgery.com/alerts>

# Suboptimal Age-Adjusted Lumbo-Pelvic Mismatch Predicts Negative Cervical-Thoracic Compensation in Obese Patients

SAMANTHA R. HORN, BA,<sup>1</sup> COLE A. BORTZ, BA,<sup>1</sup> SUBARAMAN RAMACHANDRAN, MD,<sup>1</sup> GREGORY W. POORMAN, BA,<sup>1</sup> FRANK SEGRETO, BS,<sup>1</sup> MATT SIOW, BA,<sup>1</sup> AKHILA SURE, BA,<sup>1</sup> DENNIS VASQUEZ-MONTES, MS,<sup>1</sup> BASSEL DIEBO, MD,<sup>2</sup> JARED TISHELMAN, BA,<sup>1</sup> JOHN MOON, BS,<sup>1</sup> PETER ZHOU, BA,<sup>1</sup> BRYAN BEAUBRUN, MS,<sup>1</sup> SHALEEN VIRI, MD,<sup>1</sup> CYRUS JALAI, BA,<sup>1</sup> CHARLES WANG, MD,<sup>1</sup> KARTIK SHENOY, MD,<sup>1</sup> OMAR BEHERY, MD,<sup>1</sup> THOMAS ERRICO, MD,<sup>1</sup> VIRGINIE LAFAGE, PHD,<sup>3</sup> AARON BUCKLAND, MD,<sup>1</sup> PETER G. PASSIAS, MD<sup>1</sup>

<sup>1</sup>Department of Orthopaedics, NYU Langone Orthopaedic Hospital, New York, New York, <sup>2</sup>Department of Orthopedic Surgery, SUNY Downstate, New York, New York, <sup>3</sup>Department of Orthopaedics, Hospital for Special Surgery, New York, New York

## ABSTRACT

**Background:** Given the paucity of literature regarding compensatory mechanisms used by obese patients with sagittal malalignment, it is necessary to gain a better understanding of the effects of obesity on compensation after comparing the degree of malalignment to age-adjusted ideals. This study aims to compare baseline alignment of obese and nonobese patients using age-adjusted spino-pelvic alignment parameters, describing associated spinal changes.

**Methods:** Patients  $\geq 18$  years with full-body stereoradiographs were propensity-score matched for sex, baseline pelvic incidence (PI), and categorized as nonobese (body mass index  $< 30\text{kg/m}^2$ ) or obese (body mass index  $\geq 30$ ). Age-adjusted ideals were calculated for sagittal vertical axis, spino-pelvic mismatch (PI-LL), pelvic tilt, and T1 pelvic angle using established formulas. Patients were stratified as meeting alignment ideals, being above ideal, or being below. Spinal alignment parameters included C0-C2, C2-C7, C2-T3, cervical thoracic pelvic angle, cervical sagittal vertical axis SVA, thoracic kyphosis, T1 pelvic angle, T1 slope, sagittal vertical axis, lumbar lordosis (LL), PI, PI-LL, pelvic tilt. Lower-extremity parameters included sacrofemoral angle, knee flexion (KA), ankle flexion (AA), pelvic shift (PS), and global sagittal angle (GSA). Independent *t* tests compared parameters between cohorts.

**Results:** Included: 800 obese, 800 nonobese patients. Both groups recruited lower-extremity compensation: sacrofemoral angle ( $P = .004$ ), KA, AA, PS, GSA (all  $P < .001$ ). Obese patients meeting age-adjusted PI-LL had greater lower-extremity compensation than nonobese patients: lower sacrofemoral angle ( $P = .002$ ), higher KA ( $P = .008$ ), PS ( $P = .002$ ), and GSA ( $P = .02$ ). Obese patients with PI-LL mismatch higher than age-adjusted ideal recruited greater lower-extremity compensation than nonobese patients: higher KA, AA, PS, GSA (all  $P < .001$ ). Obese patients showed compensation through the cervical spine: increased C0-C2, C2-C7, C2-T3, and cervical sagittal vertical axis (all  $P < .001$ ), high T1 pelvic angle ( $P < .001$ ), cervical thoracic pelvic angle ( $P = .03$ ), and T1 slope ( $P < .001$ ), with increased thoracic kyphosis ( $P = .015$ ) and decreased LL ( $P < .001$ ) compared to nonobese patients with PI-LL larger than age-adjusted ideal.

**Conclusions:** Regardless of malalignment severity, obese patients recruited lower-limb compensation more than nonobese patients. Obese patients with PI-LL mismatch larger than age-adjusted ideal also develop upper-cervical and cervicothoracic compensation for malalignment.

**Level of Evidence:** III

**Clinical Relevance:** Clinical evaluation should extend to the cervical spine in obese patients not meeting age-adjusted sagittal alignment ideals.

Biomechanics

Keywords: sagittal alignment, obese, compensation, ideal alignment, lower extremity

## INTRODUCTION

In response to progressive sagittal malalignment, the body minimizes muscle energy expenditure and maintains balance through a chain of spinopelvic and lower-extremity compensatory mechanisms.<sup>1,2</sup>

In cases of anterior spinopelvic alignment, decreased lumbar lordosis (LL) drives forward truncal alignment and subsequent compensatory thoracic hypokyphosis, pelvic retroversion, knee flexion (KA), and ankle dorsiflexion, among other changes.<sup>3–5</sup> Regardless of whether these changes in sagittal

alignment are age-related or pathological, effective care for progressive anterior sagittal malalignment requires a full understanding of spinopelvic and lower-extremity compensation.

Patterns of spinopelvic and lower-extremity compensation secondary to progressive sagittal malalignment have previously been described in patients diagnosed with adult spinal deformity.<sup>6,7</sup> Ferrero et al<sup>8</sup> demonstrated differential recruitment of lower-limb compensatory mechanisms, particularly KA, among adult spinal deformity patients with varying T-1 spinopelvic inclinations. Another study assessing age-related differences in spinopelvic and lower-limb compensation among adult spinal deformity patients found differential recruitment of KA and ankle dorsiflexion in older patients with severe sagittal deformity.<sup>9</sup> Unfortunately, differences in compensatory mechanisms between obese and nonobese patients are undercharacterized in the literature.

Recent research shows both obesity and advanced age as associated with changes in sagittal alignment.<sup>10–12</sup> It follows, then, that patient-related factors of obesity and age should affect the recruitment of spinopelvic and lower-extremity compensatory mechanisms for sagittal malalignment. Indeed, a recent study found that obese patients with progressive sagittal malalignment recruit more lower-extremity compensation than nonobese patients, when controlling for age, sex, and baseline pelvic incidence (PI).<sup>13</sup> This study was lacking, however, in its failure to stratify patient cohorts by age-adjusted spinopelvic alignment goals. As ideal sagittal alignment has been shown to vary with age, a complete comparison of compensatory mechanisms between obese and nonobese patients must take into account normal, age-related changes in sagittal alignment.<sup>14</sup>

The present study aims to compare the spinopelvic alignment of obese and nonobese patient cohorts using age-adjusted alignment parameters, describing how the cohorts differ in recruitment of compensatory mechanisms for progressive sagittal malalignment.

## MATERIALS AND METHODS

### Data Collection

This study was a retrospective review of patients visiting a single academic center for spine-related complaints from 2013 to 2015. Data, including age,

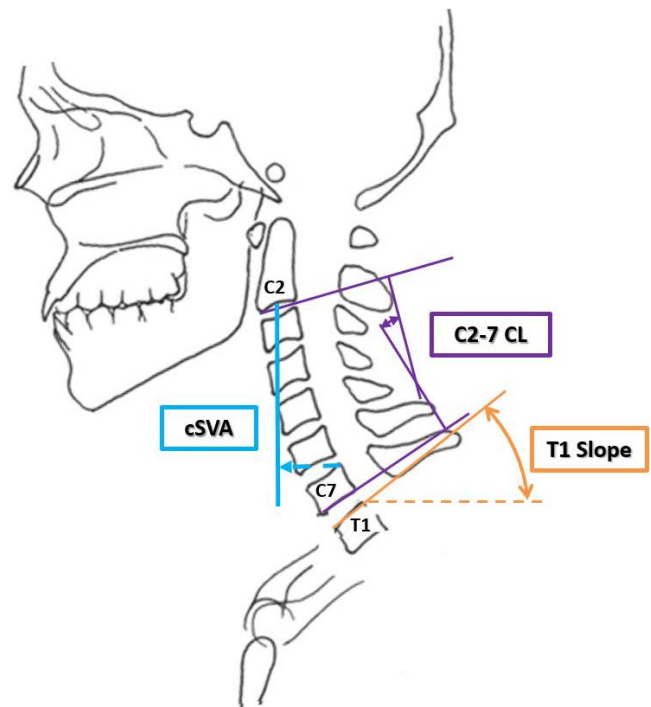


Figure 1. Schematic of cervical alignment parameters.

sex, and body mass index (BMI) were collected prospectively on consecutive patients. Inclusion criteria included patients  $\geq 18$  years with available full-body radiographs. Patients underwent full-body, biplanar stereographic imaging (EOS Imaging, Paris, France), positioned in a weight-bearing, free-standing position, arms flexed at  $45^\circ$  with fingers on the clavicles to avoid superimposition with the spine.<sup>15,16</sup> This position optimizes view of spinal components without altering the patient's center of gravity.<sup>17</sup> Institutional review board approval was obtained before study initiation.

### Analysis of Radiographic Parameters

Alignment parameters were measured at a single center using validated software (Surgimap, Nemaris Inc., New York, New York).<sup>18</sup> Cervical and cervicothoracic spinal alignment parameters assessed were C0-C2, C2-C7, and C2-T3 angles, cervical thoracic pelvic angle (angle between a line from the centroid of C2 to femoral heads and a line from femoral heads to centroid of C1), T1 slope (angle between horizontal and superior endplate of T1), and cervical sagittal vertical axis (cSVA: sagittal offset from plumb line extended from centroid of C2 to posterior superior aspect of C7; Figure 1).

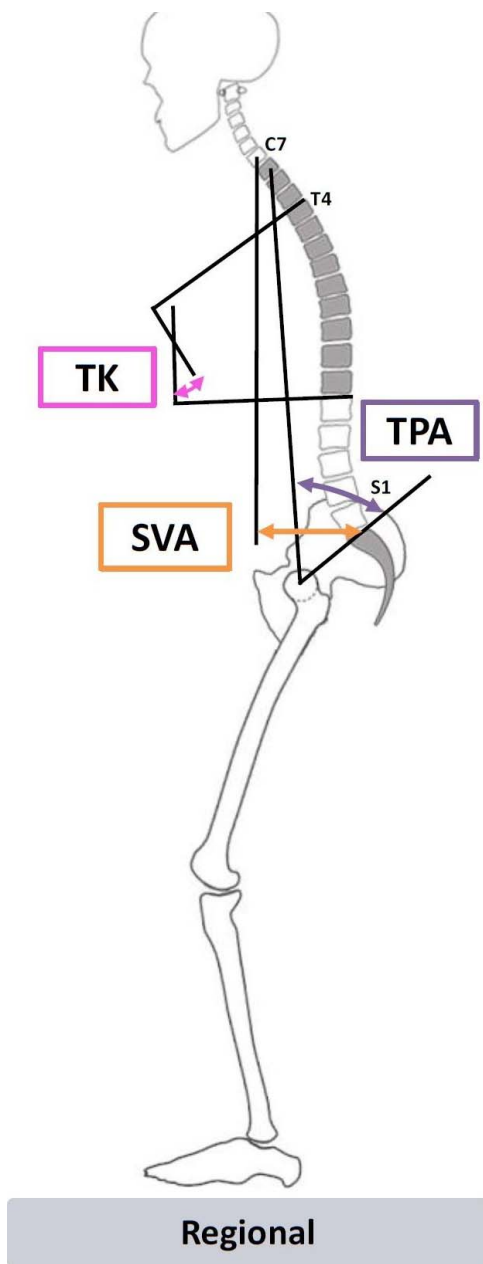


Figure 2. Schematic of regional alignment parameters.

Figure 2 shows a schematic of regional parameters, including thoracic kyphosis (sagittal Cobb angle between upper endplate of T4 and lower endplate of T12), T1 pelvic angle (TPA: angle formed by the line between the center of T1 vertebral body and the bicoxofemoral axis and the line between the bicoxofemoral axis and the middle of S1 endplate), and sagittal vertical axis (SVA: horizontal distance between plumb line extended from C7 vertebral body and posterosuperior S1 vertebral corner).

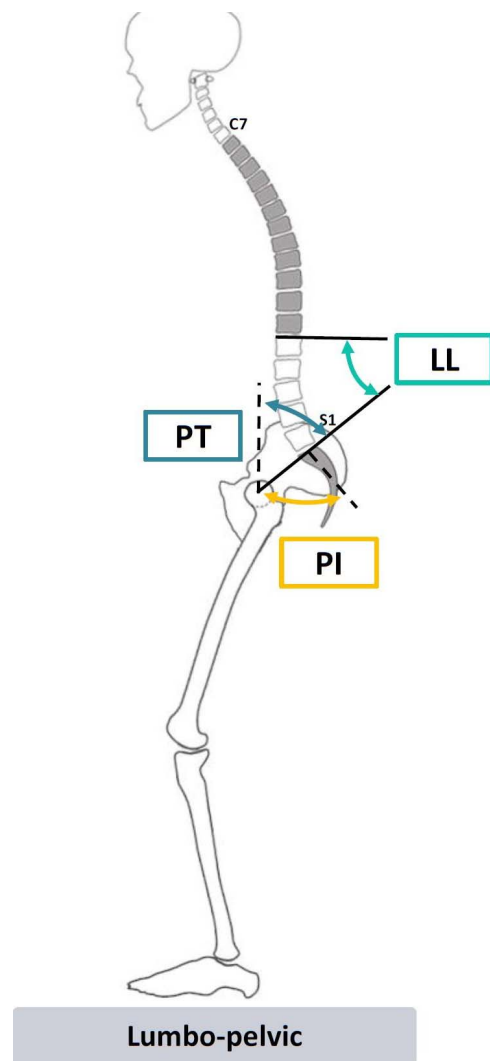


Figure 3. Schematic of lumbopelvic alignment.

Lumbo-pelvic measurements are outlined in Figure 3, and included lumbar lordosis (LL: angle between upper endplate of L1 the upper endplate of S1), pelvic incidence (PI: angle between vertical and line from the center of the bicoxofemoral axis to the midpoint of S1 endplate), pelvic tilt (PT: angle between vertical and line from the center of the bicoxofemoral axis to the midpoint of S1 endplate), and the mismatch between PI and LL (PI-LL).

Figure 4 details global and lower-extremity parameters, including sacrofemoral angle (angle formed by the line from the middle of S1 endplate to the bicoxofemoral axis and the line between the bicoxofemoral axis and the femoral axis), KA (angle between mechanical axis of the femur and mechanical axis of tibia), ankle flexion (AA: angle between vertical and mechanical axis of tibia), pelvic shift (PS: sagittal offset between posterosuperior corner

of the sacrum and anterior cortex of distal tibia), and global sagittal angle (GSA: angle of the line between the middle of C7 vertebral body to the knee, to the midpoint between the 2 femoral condyles and the line extended from this point to the posterosuperior aspect of S1).

### Statistical Methods

All statistical tests were performed using SPSS software (v21.0, Armonk, NY, USA). Included patients were grouped into 2 cohorts according to BMI at first visit: obese (BMI  $\geq 30$  kg/m<sup>2</sup>) and nonobese (BMI  $< 30$  kg/m<sup>2</sup>). Obese and nonobese cohorts were propensity-score matched for the potentially confounding covariates of sex and baseline PI, as previously described in the literature.<sup>13</sup> Age-specific alignment ideals were established for SVA, PI-LL, PT, and TPA, based on previously published values<sup>14</sup>:

$$\text{PI-LL} = \frac{(\text{Age} - 55)}{2} + 3$$

$$\text{SVA} = 2 \times (\text{Age} - 55) + 25$$

$$\text{PT} = \frac{(\text{Age} - 55)}{3} + 20$$

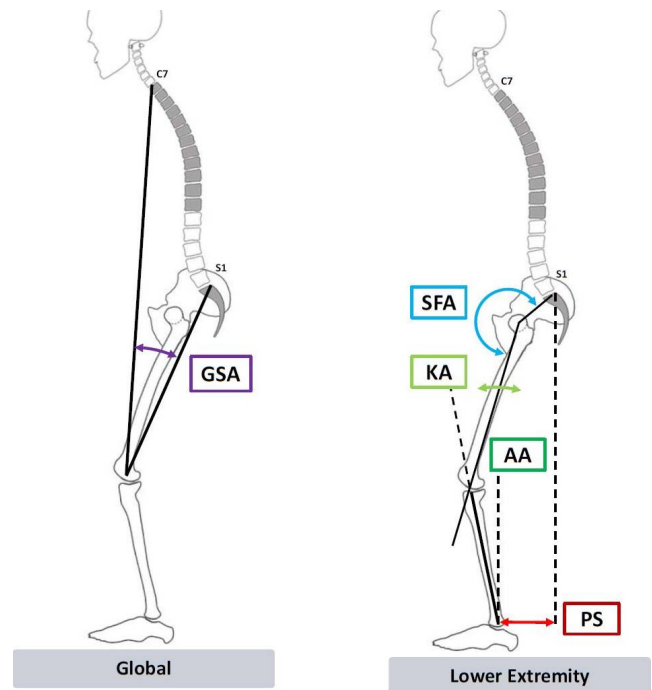
$$\text{TPA} = \frac{(\text{Age} - 55)}{2} + 16$$

Patients meeting alignment ideals within a  $\pm 10$ -year window of their age were considered matches for age-specific alignment. Obese and nonobese cohorts were then stratified by patients who matched age-specific alignment ideals, patients below age-specific alignment ideals, and patients above age-specific alignment ideals. Baseline radiographic parameters were compared between matched cohorts for each age-specific alignment category using independent samples *t* tests. Statistical significance was set  $P < .050$ .

## RESULTS

### Cohort Overview

Following propensity-score matching, 1600 patients met inclusion criteria (obese = 800, non-obese = 800). The overall cohort had a mean age of  $56.5 \pm 19.4$  years, mean BMI of  $29.6 \pm 7.1$  kg/m<sup>2</sup>, and was comprised of 51.7% females. Among the most common overall diagnoses were scoliosis



**Figure 4.** Schematics of global (left) and lower extremity (right) alignment parameters.

(20.9%), lower back pain (11.4%), stenosis (9.3%), and spondylolisthesis (6.5%). There were no significant differences in patient sex between obesity cohorts. Compared to the nonobese cohort, the obese cohort reported significantly inferior health-related quality of life scores on the SRS-22 questionnaire ( $3.6 \pm 0.8$  and  $2.8 \pm 0.7$ , respectively,  $P < .001$ ) and the Oswestry Disability Index ( $29.6 \pm 21.9$  and  $42.8 \pm 21.0$ , respectively,  $P < .001$ ). Obese patients had significantly larger forward sagittal alignment as measured by SVA and TPA (Table 1, both  $P < .001$ ), and showed significantly less lumbar lordosis ( $P < .001$ ) than nonobese patients. On average, obese patients adopted significantly more C0-C2 extension than nonobese patients ( $P < .001$ ), and had larger cSVAs ( $P = .011$ ). All patients recruited lower-extremity compensation in sacrofemoral angle ( $P = .004$ ), KA, AA, PS, and GSA (all  $P < .001$ ).

### Comparison of Radiographic Parameters by Age-Adjusted PT Category

Table 2 shows that in all age-adjusted PT categories, obese patients compensated for sagittal malalignment through pelvic retroversion, adopting significantly greater PI-LL and PT than nonobese patients (all  $P < .050$ ). All obese cohorts similarly adopted greater TPA, T1 slope, and SVA than



**Table 1.** Overall comparison of baseline sagittal spino-pelvic and lower-extremity radiographic parameters between obese and nonobese patient cohorts. *P* values for significant differences between means set to  $P < .05$ ; bold type indicates significance at  $P < .05$ .

|           | Obese (n = 800) |       | Nonobese (n = 800) |       | <i>P</i> |
|-----------|-----------------|-------|--------------------|-------|----------|
|           | Mean            | SD    | Mean               | SD    |          |
| C0-C2 (°) | 17.62           | 9.39  | 14.88              | 10.97 | < .001   |
| C2-C7 (°) | 7.11            | 13.16 | 5.36               | 17.66 | .257     |
| C2-T3 (°) | 8.18            | 14.75 | 5.78               | 19.67 | .165     |
| CTPA (°)  | 2.94            | 1.54  | 2.91               | 1.69  | .703     |
| cSVA (mm) | 25.42           | 12.11 | 22.28              | 12.39 | .011     |
| TK (°)    | -40.62          | 16.28 | -39.18             | 17.18 | .086     |
| TPA (°)   | 18.46           | 11.96 | 14.40              | 12.54 | < .001   |
| T1S (°)   | 30.77           | 12.19 | 28.19              | 13.44 | < .001   |
| SVA (mm)  | 43.21           | 53.82 | 18.84              | 49.14 | < .001   |
| LL (°)    | 47.47           | 16.92 | 51.21              | 16.45 | < .001   |
| PI (°)    | 54.41           | 13.92 | 54.34              | 13.36 | .926     |
| PT (°)    | 19.75           | 10.36 | 18.00              | 10.88 | .001     |
| PI-LL (°) | 6.94            | 16.79 | 3.14               | 17.58 | < .001   |
| SFA (°)   | 199.92          | 10.63 | 201.44             | 10.24 | .004     |
| KA (°)    | 6.27            | 8.20  | 1.93               | 9.95  | < .001   |
| AA (°)    | 6.44            | 3.94  | 5.37               | 7.39  | < .001   |
| PS (mm)   | 43.43           | 40.02 | 19.84              | 37.30 | < .001   |
| GSA (°)   | 5.05            | 5.30  | 2.20               | 5.08  | < .001   |

corresponding nonobese cohorts. Obese patients with PT mismatch greater than age-adjusted ideal ( $P = .001$ ) adopted more upper-cervical C0-C2 compensation than nonobese patients. Significant differences in lower-extremity compensatory mechanisms were also observed in patients across all 3 age-adjusted PT categories, with all obese cohorts adopting higher KA, AA, PS, and GSA than corresponding nonobese cohorts (all  $P < .040$ ). That said, controlling for age-adjusted differences in TPA, SVA, and PI-LL, there were no significant differences in the recruitment of lower-extremity KA, AA, PS, and GSA compensatory mechanisms between obese and nonobese patients with PT

mismatch greater than age-adjusted ideal (all  $P > .050$ ).

#### Comparison of Radiographic Parameters by Age-Adjusted SVA Category

Table 3 shows differences in spino-pelvic and lower-extremity compensatory mechanisms between obesity cohorts across all 3 age-adjusted SVA categories. Notably, obese patients with baseline SVA greater than age-adjusted ideal demonstrated more cervical and cervicothoracic compensation than nonobese patients, indicated by higher C0-C2, C2-C7, and C2-T3 (all  $P < .010$ ). Obese patients meeting age-adjusted expectations for

**Table 2.** Comparison of baseline sagittal spino-pelvic and lower-extremity radiographic parameters between obesity cohorts of age-adjusted pelvic tilt (PT) alignment ideal categories. Bolded values indicate statistical significance to  $P < .05$ .

|           | Match Ideal PT  |                    | < Ideal PT      |                    | > Ideal PT      |                    |
|-----------|-----------------|--------------------|-----------------|--------------------|-----------------|--------------------|
|           | Obese (n = 206) | Nonobese (n = 237) | Obese (n = 372) | Nonobese (n = 337) | Obese (n = 222) | Nonobese (n = 226) |
| C0-C2 (°) | 18.19           | 14.68              | <b>17.35*</b>   | <b>15.58*</b>      | <b>17.54*</b>   | <b>14.02*</b>      |
| C2-C7 (°) | 8.30            | 2.94               | 4.67            | 5.43               | 9.21            | 7.51               |
| C2-T3 (°) | <b>8.80*</b>    | <b>1.29*</b>       | 5.85            | 7.49               | 10.55           | 8.02               |
| CTPA (°)  | 3.01            | 2.94               | 2.83            | 2.87               | 3.05            | 2.94               |
| cSVA (mm) | <b>27.37*</b>   | <b>22.48*</b>      | 24.12           | 22.76              | 25.60           | 21.56              |
| TK (°)    | -40.95          | -39.29             | -41.06          | -41.20             | <b>-39.57*</b>  | <b>-36.06*</b>     |
| TPA (°)   | <b>19.85*</b>   | <b>14.03*</b>      | <b>11.30*</b>   | <b>8.09*</b>       | <b>29.17*</b>   | <b>24.20*</b>      |
| T1S (°)   | <b>31.07*</b>   | <b>27.75*</b>      | <b>30.21*</b>   | <b>28.38*</b>      | <b>31.43*</b>   | <b>28.36*</b>      |
| SVA (mm)  | <b>42.31*</b>   | <b>12.73*</b>      | <b>34.79*</b>   | <b>13.83*</b>      | <b>58.14*</b>   | <b>32.72*</b>      |
| LL (°)    | <b>46.74*</b>   | <b>51.72*</b>      | <b>49.70*</b>   | <b>53.46*</b>      | 44.42           | 47.29              |
| PI (°)    | 55.54           | 54.55              | 47.71           | 48.11              | 64.57           | 63.41              |
| PT (°)    | <b>21.74*</b>   | <b>18.38*</b>      | <b>12.07*</b>   | <b>10.97*</b>      | <b>30.78*</b>   | <b>28.09*</b>      |
| PI-LL (°) | <b>8.80*</b>    | <b>2.83*</b>       | <b>-1.99*</b>   | <b>-5.35*</b>      | <b>20.15*</b>   | <b>16.12*</b>      |
| SFA (°)   | 202.42          | 202.21             | <b>192.30*</b>  | <b>194.56*</b>     | 210.37          | 210.91             |
| KA (°)    | <b>5.74*</b>    | <b>1.61*</b>       | <b>5.85*</b>    | <b>1.18*</b>       | <b>7.45*</b>    | <b>3.40*</b>       |
| AA (°)    | <b>6.42*</b>    | <b>5.43*</b>       | <b>6.09*</b>    | <b>4.77*</b>       | <b>7.04*</b>    | <b>6.22*</b>       |
| PS (mm)   | <b>43.87*</b>   | <b>19.07*</b>      | <b>32.50*</b>   | <b>9.50*</b>       | <b>61.33*</b>   | <b>36.05*</b>      |
| GSA (°)   | <b>4.98*</b>    | <b>1.71*</b>       | <b>3.82*</b>    | <b>1.21*</b>       | <b>7.18*</b>    | <b>4.17*</b>       |

**Table 3.** Comparison of baseline sagittal spino-pelvic and lower-extremity radiographic parameters between obesity cohorts of age-adjusted sagittal vertical axis (SVA) alignment ideal. Bolded values indicate statistical significance to  $P < .05$ .

|           | Match Ideal SVA |                    | < Ideal SVA     |                    | > Ideal SVA     |                    |
|-----------|-----------------|--------------------|-----------------|--------------------|-----------------|--------------------|
|           | Ob (n = 257)    | Nonobese (n = 194) | Obese (n = 259) | Nonobese (n = 281) | Obese (n = 268) | Nonobese (n = 243) |
| C0-C2 (°) | <b>17.44*</b>   | <b>15.15*</b>      | 17.99           | 16.84              | <b>17.47*</b>   | <b>12.83*</b>      |
| C2-C7 (°) | 6.23            | 9.48               | 2.57            | 7.37               | <b>12.46*</b>   | <b>4.63*</b>       |
| C2-T3 (°) | <b>5.87*</b>    | <b>12.58*</b>      | 3.40            | 6.71               | <b>15.52*</b>   | <b>5.30*</b>       |
| CTPA (°)  | 3.00            | 2.83               | <b>3.08*</b>    | <b>3.37*</b>       | 2.75            | 2.52               |
| cSVA (mm) | 25.24           | 22.86              | 24.39           | 20.77              | 26.69           | 24.09              |
| TK (°)    | -41.83          | -41.89             | -42.03          | -40.93             | -38.31          | -36.06             |
| TPA (°)   | 17.92           | 17.65              | <b>12.03*</b>   | <b>13.62*</b>      | <b>26.11*</b>   | <b>17.82*</b>      |
| T1S (°)   | 30.33           | 31.14              | <b>26.03*</b>   | <b>28.15*</b>      | <b>36.54*</b>   | <b>29.42*</b>      |
| SVA (mm)  | 37.22           | 32.40              | .024            | -0.13              | <b>95.45*</b>   | <b>48.27*</b>      |
| LL (°)    | 49.95           | 50.39              | 52.84           | 52.45              | <b>39.45*</b>   | <b>46.82*</b>      |
| PI (°)    | 55.55           | 56.41              | <b>51.29*</b>   | <b>54.48*</b>      | 56.81           | 55.04              |
| PT (°)    | 19.92           | 20.25              | <b>17.79*</b>   | <b>19.89*</b>      | <b>21.98*</b>   | <b>17.88*</b>      |
| PI-LL (°) | 5.59            | 6.02               | <b>-1.55*</b>   | <b>2.03*</b>       | <b>17.37*</b>   | <b>8.22*</b>       |
| SFA (°)   | <b>201.12*</b>  | <b>203.22*</b>     | <b>200.51*</b>  | <b>204.19*</b>     | 198.30          | 199.22             |
| KA (°)    | <b>5.23*</b>    | <b>1.96*</b>       | <b>3.33</b>     | <b>1.69*</b>       | <b>10.62*</b>   | <b>4.45*</b>       |
| AA (°)    | 6.43            | 4.94               | 6.06            | 6.00               | <b>6.94*</b>    | <b>5.78*</b>       |
| PS (mm)   | <b>35.75*</b>   | <b>26.34*</b>      | <b>25.11*</b>   | <b>15.39*</b>      | <b>71.46*</b>   | <b>32.19*</b>      |
| GSA (°)   | <b>4.35*</b>    | <b>3.40*</b>       | 1.34            | 0.89               | <b>9.77*</b>    | <b>4.77*</b>       |

SVA also showed higher C0-C2 ( $P = .015$ ) and C2-T3 ( $P = .043$ ) compensation than nonobese patients. Obese patients with SVA mismatch higher than age-adjusted ideal and obese patients with SVA mismatch lower than age-adjusted ideal showed greater global compensation by the metrics of TPA and T1 slope (all  $P < .04$ ) as compared to corresponding nonobese cohorts. Obese patients across all 3 categories of age-adjusted SVA recruited greater lower-extremity compensation in KA and PS (all  $P < .01$ ). Controlling for age-adjusted differences in PT, PI-LL, and TPA, there were no significant differences between obese and nonobese cohorts in their recruitment of compensatory C0-C2

lordosis for patients with SVAs matching age-adjusted ideals ( $P > .050$ ). Still, across all 3 SVA age-adjusted categories, obese patients had significantly higher KA and PS than nonobese patients ( $P < .025$ ).

#### Comparison of Radiographic Parameters by Age-Adjusted PI-LL Category

Table 4 shows increased recruitment of lower-extremity compensatory mechanisms for obese patients across all 3 age-adjusted PI-LL categories. In all age-adjusted PI-LL categories, obese patients showed higher KA and GSA compared to nonobese patients (all  $p < 0.020$ ). Compared to nonobese,

**Table 4.** Comparison of baseline sagittal spino-pelvic and lower-extremity radiographic parameters between obesity cohorts of age-adjusted pelvic incidence–lumbar lordosis (PI-LL) alignment ideal categories. Bolded values indicate statistical significance to  $P < .05$ .

|           | Match Ideal PI-LL |                    | < Ideal PI-LL   |                    | > Ideal PI-LL   |                    |
|-----------|-------------------|--------------------|-----------------|--------------------|-----------------|--------------------|
|           | Obese (n = 169)   | Nonobese (n = 153) | Obese (n = 309) | Nonobese (n = 227) | Obese (n = 299) | Nonobese (n = 291) |
| C0-C2 (°) | 17.23             | 17.35              | 17.54           | 16.14              | <b>17.65*</b>   | <b>13.48*</b>      |
| C2-C7 (°) | 7.48              | 7.83               | 5.45            | 6.08               | 8.70            | 4.22               |
| C2-T3 (°) | 8.38              | 5.62               | 6.83            | 9.13               | 9.48            | 4.84               |
| CTPA (°)  | 3.00              | 3.32               | 3.12            | 3.27               | <b>2.71*</b>    | <b>2.40*</b>       |
| cSVA (mm) | 27.53             | 28.37              | 24.46           | 21.64              | <b>25.41*</b>   | <b>21.49*</b>      |
| TK (°)    | -41.81            | -40.92             | -47.56          | -48.02             | <b>-32.76*</b>  | <b>-29.73*</b>     |
| TPA (°)   | 18.71             | 18.85              | <b>10.50*</b>   | <b>7.91*</b>       | <b>27.58*</b>   | <b>21.41*</b>      |
| T1S (°)   | 30.78             | 32.33              | 30.86           | 30.12              | <b>31.31*</b>   | <b>25.87*</b>      |
| SVA (mm)  | 39.72             | 32.67              | <b>19.71*</b>   | <b>1.84*</b>       | <b>73.27*</b>   | <b>37.87*</b>      |
| LL (°)    | 48.54             | 48.44              | <b>56.12*</b>   | <b>59.15*</b>      | <b>37.15*</b>   | <b>42.20*</b>      |
| PI (°)    | 55.89             | 56.81              | 49.25           | 49.74              | 59.44           | 58.80              |
| PT (°)    | 20.68             | 21.74              | 13.24           | 12.58              | <b>26.74*</b>   | <b>23.77*</b>      |
| PI-LL (°) | 7.35              | 8.38               | <b>-6.87*</b>   | <b>-9.41*</b>      | <b>22.29*</b>   | <b>16.60*</b>      |
| SFA (°)   | <b>200.94*</b>    | <b>204.01*</b>     | <b>194.86*</b>  | <b>197.09*</b>     | 205.02          | 205.95             |
| KA (°)    | <b>6.31*</b>      | <b>2.51*</b>       | <b>4.52*</b>    | <b>0.95*</b>       | <b>8.55*</b>    | <b>3.82*</b>       |
| AA (°)    | 6.57              | 4.79               | <b>6.13*</b>    | <b>5.46*</b>       | <b>6.82*</b>    | <b>6.01*</b>       |
| PS (mm)   | <b>43.91*</b>     | <b>33.31*</b>      | <b>24.61*</b>   | <b>4.65*</b>       | <b>65.82*</b>   | <b>35.29*</b>      |
| GSA (°)   | <b>4.86*</b>      | <b>3.79*</b>       | <b>2.53*</b>    | <b>0.28*</b>       | <b>8.19*</b>    | <b>4.34*</b>       |

**Table 5.** Comparison of baseline sagittal spino-pelvic and lower-extremity radiographic parameters between obesity cohorts of age-adjusted T1 pelvic angle (TPA) alignment ideal categories. Bolded values indicate statistical significance to  $P < .05$ .

|           | Match Ideal TPA |                    | < Ideal TPA     |                    | > Ideal TPA     |                    |
|-----------|-----------------|--------------------|-----------------|--------------------|-----------------|--------------------|
|           | Obese (n = 289) | Nonobese (n = 319) | Obese (n = 288) | Nonobese (n = 268) | Obese (n = 223) | Nonobese (n = 205) |
| C0-C2 (°) | <b>17.92*</b>   | <b>14.41*</b>      | 17.20           | 17.21              | <b>17.82*</b>   | <b>12.48*</b>      |
| C2-C7 (°) | 7.06            | 4.55               | 3.46            | 6.37               | 10.43           | 5.63               |
| C2-T3 (°) | 8.87            | 3.67               | 4.20            | 7.88               | 11.14           | 6.56               |
| CTPA (°)  | 2.96            | 2.96               | 2.98            | 3.17               | 2.86            | 2.52               |
| cSVA (mm) | <b>26.31*</b>   | <b>21.99*</b>      | 23.79           | 22.90              | 26.09           | 22.31              |
| TK (°)    | -40.58          | -39.65             | -42.14          | -42.74             | <b>-38.70*</b>  | <b>-34.25*</b>     |
| TPA (°)   | <b>18.14*</b>   | <b>13.72*</b>      | 9.42            | 9.01               | <b>30.54*</b>   | <b>23.24*</b>      |
| T1S (°)   | 29.82           | 28.72              | 28.87           | 28.57              | <b>34.46*</b>   | <b>27.66*</b>      |
| SVA (mm)  | <b>38.07*</b>   | <b>16.07*</b>      | <b>16.64*</b>   | <b>4.88*</b>       | <b>84.18*</b>   | <b>43.73*</b>      |
| LL (°)    | 49.37           | 51.45              | <b>50.96*</b>   | <b>53.88*</b>      | <b>40.51*</b>   | <b>46.98*</b>      |
| PI (°)    | <b>55.78*</b>   | <b>53.62*</b>      | <b>46.42*</b>   | <b>49.41*</b>      | 62.93           | 62.31              |
| PT (°)    | <b>20.13*</b>   | <b>17.64*</b>      | 12.33           | 13.47              | <b>28.84*</b>   | <b>25.07*</b>      |
| PI-LL (°) | <b>6.41*</b>    | <b>2.17*</b>       | -4.54           | -4.47              | <b>22.43*</b>   | <b>15.32*</b>      |
| SFA (°)   | 200.98          | 201.39             | <b>193.82*</b>  | <b>197.51*</b>     | 206.44          | 207.13             |
| KA (°)    | <b>5.46*</b>    | <b>1.65*</b>       | <b>4.56*</b>    | <b>0.83*</b>       | <b>9.51*</b>    | <b>3.94*</b>       |
| AA (°)    | <b>6.31*</b>    | <b>5.40*</b>       | 6.05            | 4.87               | <b>7.10*</b>    | <b>6.00*</b>       |
| PS (mm)   | <b>39.85*</b>   | <b>18.30*</b>      | <b>24.93*</b>   | <b>9.60*</b>       | <b>71.96*</b>   | <b>37.30*</b>      |
| GSA (°)   | <b>4.50*</b>    | <b>1.88*</b>       | <b>2.32*</b>    | <b>0.73*</b>       | <b>9.29*</b>    | <b>4.85*</b>       |

obese patients with PI-LL mismatch greater than age-adjusted ideal showed recruitment of upper-cervical and cervical compensatory mechanisms: C0-C2 ( $P < .001$ ), cervical thoracic pelvic angle ( $P = .030$ ), cSVA ( $P = .042$ ). Obese cohorts in which PI-LL mismatch was greater than age-adjusted ideal and in which PI-LL mismatch was lower than age-adjusted ideal showed less lumbar lordosis ( $P < .001$  and  $P = .004$ , respectively) and had significantly larger TPA values (both  $P < .001$ ) than corresponding nonobese cohorts. Controlling for age-adjusted differences in PT, SVA, and TPA, there were no significant differences between obese and nonobese patients that matched age-adjusted PI-LL ideal in recruitment of lower-extremity compensatory mechanisms (all  $P > .050$ ); however, obese patients with PI-LL mismatch greater than age-adjusted ideal and obese patients with PI-LL mismatch less than age-adjusted ideal showed increased KA and PS compensation (all  $P < .030$ ) as compared to corresponding nonobese patients.

#### Comparison of Radiographic Parameters by Age-Adjusted TPA Category

Across all 3 categories for age-adjusted TPA, obese patients had greater lower-extremity compensation in KA, PS, and GSA than nonobese patients (Table 5, all  $P < .001$ ). Similarly, obese cohorts in all 3 age-adjusted TPA categories had larger mean SVAs than corresponding nonobese cohorts (all  $P < .001$ ). Obese patients with TPA mismatch

greater than age-adjusted ideal also showed increased cervical compensation as compared to nonobese patients, with larger C0-C2 lordosis ( $P < .001$ ).

## DISCUSSION

Obesity is an urgent public health issue that presents many challenges for healthcare providers. As obesity has been associated with higher perioperative complication rates and poorer long-term surgical outcomes, there is a need for increased understanding, monitoring, and care for obese patients undergoing spine surgery.<sup>19–21</sup> Improving postoperative outcomes for obese patients with pathological sagittal malalignment requires a comprehensive preoperative plan that effectively distinguishes the causes of malalignment from the compensatory mechanisms. As such, it is important to understand the compensatory mechanisms used by both obese and nonobese patients with sagittal malalignment, taking into account both patient age and patient-specific morphologies.

Recent research has identified a number of factors that drive sagittal malalignment, including hypertrophic facet joints, arthritis, degenerative disc disease, and age-related atrophy of paraspinal muscles.<sup>22,23</sup> In cases of anterior sagittal malalignment, compensation typically begins proximal to the affected area of the spine in an effort to restore lumbar lordosis.<sup>3</sup> When spinal physiological and energetic reserves are exhausted, the chain of



compensation continues into the pelvis, resulting in increased PT and posterior pelvic shift, and later into the lower extremities.<sup>8,24</sup> While compensation for sagittal malalignment is well understood in patients with spinal deformity, there are few studies investigating differences in compensatory mechanisms between obese and nonobese patients. Of note, a recent study found significant differences in patterns of compensation for sagittal malalignment between obese and nonobese patients, with obese patients demonstrating increased posterior pelvic shift and KA.<sup>13</sup> That said, the study did not use age-specific spinopelvic alignment goals to compare cohorts. The use of age-adjusted spinopelvic alignment ideals in preoperative planning for sagittal malalignment correction is critical, as normal, nonpathologic sagittal malalignment has been shown to increase with age.<sup>14,25</sup>

To account for age-related variation in spinopelvic alignment, this study stratified obese and nonobese cohorts as either meeting, exceeding, or falling short of age-adjusted alignment ideals for SVA, PI-LL, PT, and TPA. Our study found that regardless of age-adjusted alignment category, obese patients recruited more lower-extremity compensation than nonobese patients, particularly increased KA and ankle dorsiflexion. These results make sense, given the decreased LL and higher PI-LL mismatch observed in the obese patient cohort. The relationship between KA and LL is well characterized in the literature, as is the relationship between obesity and lumbar hypolordosis.<sup>12,26,27</sup> That said, as studies have shown loss of LL as secondary to degeneration of the knee, the results of the present study suggest the need for clinical evaluation of both spinal alignment and KA in obese patients with sagittal malalignment.<sup>28</sup>

Our results also show that obese patients with PI-LL mismatch larger than age-adjusted ideal developed upper cervical and cervicothoracic junction compensatory mechanisms. Specifically, as compared to nonobese patients, obese patients with PI-LL mismatch larger than age-adjusted ideal showed increased cervical extension, as made evident by significantly larger C0-C2 lordosis, cSVA, and cervical thoracic pelvic angle. This is consistent with previous studies showing the cervical spine as playing a critical role in the maintenance of horizontal gaze in patients with sagittal malalignment.<sup>29-31</sup> Indeed, a recent study showed spontaneous postoperative improvement of cervical

alignment in patients undergoing surgical correction for positive sagittal malalignment, underscoring the importance of distinguishing between drivers of sagittal malalignment and the compensatory mechanisms that indirectly resolve following direct surgical correction of the drivers.<sup>32</sup> Our results show value in careful clinical evaluation of the cervical spine for obese patients with anterior sagittal malalignment.

Further support for thorough clinical cervical spine evaluation in obese patients who do not meet age-adjusted ideals for sagittal alignment comes from the present study's finding of increased cervical compensation in obese patients with SVA measurements larger than age-adjusted ideal. Previous research shows that increased BMI retroverts the sacrum, leading to larger anterior pelvic tilt.<sup>33</sup> Thus, it is possible that such biomechanical changes in the spines and pelvises of obese patients could contribute to larger SVA measurements, and consequently more severe anterior sagittal malalignment and compensatory cervical extension.

### Limitations

This analysis did not track distribution of adipose tissue, which could affect patterns in recruitment of compensatory mechanisms. Furthermore, our analysis dichotomized patient groups into obese (BMI  $\geq 30$ ) and nonobese, without investigating the relationship between morbid obesity (BMI  $\geq 40$ ) and sagittal alignment. As the prevalence of morbid obesity has increased over the past 4 decades, future research should further investigate the relationship between BMI  $\geq 40$  and sagittal compensation for sagittal malalignment.<sup>34</sup> Additionally, this study did not control for type of sagittal deformity, the heterogeneity of which may also affect patterns of compensation. The radiographic analysis in this study was also limited to the sagittal plane, not taking into account deformities in the coronal plane that could have affected sagittal alignment. Despite these factors, the large sample size, propensity-score-matched patient cohorts, and age-adjusted radiographic analysis lend our results broad generalizability.

### CONCLUSIONS

Obese patients recruit more lower-limb compensation than nonobese patients, regardless of sagittal

malalignment severity. Additionally, obese patients with anterior displacement of sagittal balance, as measured by PI-LL and SVA, demonstrate more cervical and upper-cervical compensation than nonobese counterparts. In comparing the age-adjusted sagittal parameters of obese and nonobese cohorts, this study permits a more comprehensive assessment of the compensatory mechanisms recruited by obese patients, and allows for more effective preoperative planning for obese patients with sagittal malalignment.

## REFERENCES

- Diebo BG, Ferrero E, Lafage R, et al. Recruitment of compensatory mechanisms in sagittal spinal malalignment is age and regional deformity dependent: a full-standing axis analysis of key radiographical parameters. *Spine (Phila Pa 1976)*. 2015;40(9):642–649. <https://doi.org/10.1097/BRS.0000000000000844>
- Klineberg E, Schwab FJ, Smith JS, Gupta MC, Lafage V, Bess S. Sagittal spinal pelvic alignment. *Neurosurg Clin N Am*. 2013;24(2):157–162. <https://doi.org/10.1016/j.nec.2012.12.003>
- Barrey CCC, Roussouly P, Perrin G, Le Huec J-C. Sagittal balance disorders in severe degenerative spine. Can we identify the compensatory mechanisms? *Eur Spine J*. 2011;20(Suppl 5):626–633. <https://doi.org/10.1007/s00586-011-1930-3>
- Obeid I, Hauger O, Aunoble SS, Bourghli A, Pellet N, Vital J-M. Global analysis of sagittal spinal alignment in major deformities: correlation between lack of lumbar lordosis and flexion of the knee. *Eur Spine J*. 2011;20(Suppl 5):681–685. <https://doi.org/10.1007/s00586-011-1936-x>
- Hasegawa K, Okamoto M, Hatsushikano S, et al. Standing sagittal alignment of the whole axial skeleton with reference to the gravity line in humans. *J Anat*. 2017;230(5):619–630. <https://doi.org/10.1111/joa.12586>
- Yagi M, Kaneko S, Yato Y, Asazuma T. Standing balance and compensatory mechanisms in patients with adult spinal deformity. *Spine (Phila Pa 1976)*. 2016;42(10):E584–E591. <https://doi.org/10.1097/BRS.0000000000001901>
- Diebo BG, Gammal I, Ha Y, et al. Role of ethnicity in alignment compensation: propensity matched analysis of differential compensatory mechanism recruitment patterns for sagittal malalignment in 288 ASD patients from Japan, Korea, and United States. *Spine (Phila Pa 1976)*. 2017;42(4):E234–E240. <https://doi.org/10.1097/BRS.0000000000001744>
- Ferrero E, Liabaud B, Challier V, et al. Role of pelvic translation and lower-extremity compensation to maintain gravity line position in spinal deformity. *J Neurosurg Spine*. 2015;24(3):1–11. <https://doi.org/10.3171/2015.5.SPINE14989>
- Jalai CM, Cruz DL, Diebo BG, et al. Full-body analysis of age-adjusted alignment in adult spinal deformity patients and lower-limb compensation. *Spine (Phila Pa 1976)*. 2017;42(9):653–661. <https://doi.org/10.1097/BRS.0000000000001863>
- Iyer S, Lenke LG, Nemani VM, et al. Variations in sagittal alignment parameters based on age: a prospective study of asymptomatic volunteers using full-body radiographs. *Spine (Phila Pa 1976)*. 2016;41(23):605–610. <https://doi.org/10.1097/BRS.0000000000001642>
- Smith AJ, O'Sullivan PB, Beales DJ, de Klerk N, Straker LM. Trajectories of childhood body mass index are associated with adolescent sagittal standing posture. *Int J Pediatr Obes*. 2011;6(2-2):e97–e106. <https://doi.org/10.3109/17477166.2010.530664>
- Araújo F, Lucas R, Alegrete N, Azevedo A, Barros H. Individual and contextual characteristics as determinants of sagittal standing posture: a population-based study of adults. *Spine J*. 2014;14(10):135–139. <https://doi.org/10.1016/j.spinee.2014.01.040>
- Jalai CM, Diebo BG, Cruz DL, et al. The impact of obesity on compensatory mechanisms in response to progressive sagittal malalignment. *Spine J*. 2017;17(5):681–688. <https://doi.org/10.1016/j.spinee.2016.11.016>
- Lafage R, Schwab F, Challier V, et al. Defining spinopelvic alignment thresholds: should operative goals in adult spinal deformity surgery account for age? *Spine (Phila Pa 1976)*. 2016;41(1):62–68. <https://doi.org/10.1097/BRS.0000000000001171>
- Horton WC, Brown CW, Bridwell KH, Glassman SD, Suk S-I, Cha CW. Is there an optimal patient stance for obtaining a lateral 36" radiograph? A critical comparison of three techniques. *Spine (Phila Pa 1976)*. 2005;30(4):427–433.
- Deschênes S, Charron G, Beaudoin G, et al. Diagnostic imaging of spinal deformities: reducing patients radiation dose with a new slot-scanning X-ray imager. *Spine (Phila Pa 1976)*. 2010;35(9):989–994. <https://doi.org/10.1097/BRS.0b013e3181bdca44>
- Steffen J-SS, Obeid I, Aurouer N, et al. 3D postural balance with regard to gravity line: an evaluation in the transversal plane on 93 patients and 23 asymptomatic volunteers. *Eur Spine J*. 2010;19(5):760–767. <https://doi.org/10.1007/s00586-009-1249-5>
- Akbar M, Terran J, Lafage V, et al. Use of surgimap spine in sagittal plane analysis, osteotomy planning, and correction calculation. *Neurosurg Clin N Am*. 2013;24(2):163–172. <https://doi.org/10.1016/j.nec.2012.12.007>
- Sing DC, Yue JK, Metz LN, et al. Obesity is an independent risk factor of early complications after revision spine surgery. *Spine (Phila Pa 1976)*. 2016;41(10):E632–E640. <https://doi.org/10.1097/BRS.0000000000001327>
- Knutsson BB, Michaëlsson K, Sandén B, Michaëlsson K, Sandén B. Obesity is associated with inferior results after surgery for lumbar spinal stenosis: a study of 2633 patients from the Swedish spine register. *Spine (Phila Pa 1976)*. 2013;38(5):435–441. <https://doi.org/10.1097/BRS.0b013e318270b243>
- Ii KLJ, Devine JG, Jackson KL, Devine JG. The effects of obesity on spine surgery: a systematic review of the literature. *Glob Spine J*. 2016;6(4):394–400. <https://doi.org/10.1055/s-0035-1570750>
- Barrey CCC, Roussouly P, Le Huec J-CC, D'Acunzi G, Perrin G. Compensatory mechanisms contributing to keep the sagittal balance of the spine. *Eur Spine J*. 2013;22(Suppl 6):S834–S841. <https://doi.org/10.1007/s00586-013-3030-z>
- Good CR, Auerbach JD, O'Leary PT, Schuler TC. Adult spine deformity. *Curr Rev Musculoskelet Med*. 2011;4(4):159–167. <https://doi.org/10.1007/s12178-011-9101-z>
- Lafage V, Schwab F, Patel A, Hawkinson N, Farcy J-P. Pelvic tilt and truncal inclination: two key radiographic

parameters in the setting of adults with spinal deformity. *Spine (Phila Pa 1976)*. 2009;34(17):E599–E606. <https://doi.org/10.1097/BRS.0b013e3181aad219>

25. Hasegawa K, Okamoto M, Hatsushikano S, Shimoda H, Ono M, Watanabe K. Normative values of spino-pelvic sagittal alignment, balance, age, and health-related quality of life in a cohort of healthy adult subjects. *Eur Spine J*. 2016;25(11):3675–3686. <https://doi.org/10.1007/s00586-016-4702-2>

26. Itoi E. Roentgenographic analysis of posture in spinal osteoporotics. *Spine (Phila Pa 1976)*. 1991;16(7):750–756.

27. Lee CKS, Kim YT, Hong YM, Yoo JH. Dynamic sagittal imbalance of the spine in degenerative flat back: significance of pelvic tilt in surgical treatment. *Spine (Phila Pa 1976)*. 2001;26(18):2029–2035.

28. Murata Y, Takahashi K, Yamagata M, Hanaoka E, Moriya H. The knee-spine syndrome. Association between lumbar lordosis and extension of the knee. *J Bone Joint Surg Br*. 2003;85(1):95–99.

29. Protopsaltis TS, Lafage R, Vira S, et al. Novel angular measures of cervical deformity account for upper cervical compensation and sagittal alignment. *Clin Spine Surg*. 2017;30(7):E959–E967. <https://doi.org/10.1097/BSD.0000000000000554>

30. Bao H, Lafage R, Liabaud B, et al. Three types of sagittal alignment regarding compensation in asymptomatic adults: the contribution of the spine and lower limbs. *Eur Spine J*. 2018;27(2):397–405. <https://doi.org/10.1007/s00586-017-5159-7>

31. Obeid I, Boniello A, Boissiere L, et al. Cervical spine alignment following lumbar pedicle subtraction osteotomy for sagittal imbalance. *Eur Spine J*. 2015;24(6):1191–1198. <https://doi.org/10.1007/s00586-014-3738-4>

32. Smith JS, Shaffrey CI, Lafage V, et al. Spontaneous improvement of cervical alignment after correction of global sagittal balance following pedicle subtraction osteotomy. *J Neurosurg Spine*. 2012;17(4):300–307. <https://doi.org/10.3171/2012.6.SPINE1250>

33. Onyemaechi NO, Anyanwu GE, Obikili EN, Onwua-soigwe O, Nwankwo OE. Impact of overweight and obesity on the musculoskeletal system using lumbosacral angles. *Patient Prefer Adherence*. 2016;10:291–296. <https://doi.org/10.2147/PPA.S90967>

34. NCD Risk Factor Collaboration (NCD-RisC). Trends in adult body-mass index in 200 countries from 1975 to 2014: a pooled analysis of 1698 population-based measurement studies with 19.2 million participants. *Lancet (London, England)*. 2016;387(10026):1377–1396. [https://doi.org/10.1016/S0140-6736\(16\)30054-X](https://doi.org/10.1016/S0140-6736(16)30054-X)

**Disclosures and COI:** The authors report no conflicts of interest concerning the materials or methods used in this study or the findings specified in this paper.

**Ethics Review Committee Statement:** Institutional Review Board approval was obtained for this study, prior to patient enrollment.

**Corresponding Author:** Peter G. Passias, MD, New York Spine Institute, NYU Langone Orthopaedic Hospital, Department of Orthopaedic Surgery, 301 East 17th St, New York, NY, 10003. Phone: (516) 357-8777; Fax: (516) 357-0087; Email: [Peter.Passias@nyumc.org](mailto:Peter.Passias@nyumc.org).

Published 00 Month 2019

This manuscript is generously published free of charge by ISASS, the International Society for the Advancement of Spine Surgery. Copyright © 2019 ISASS. To see more or order reprints or permissions, see <http://ijssurgery.com>.