

## Multilevel extreme lateral interbody fusion (XLIF) and osteotomies for 3-dimensional severe deformity: 25 consecutive cases

Paul C. McAfee, Erin Shucosky, Liana Chotikul, Ben Salari, Lun Chen and Dan Jerrems

*Int J Spine Surg* 2013, 7 () e8-e19

doi: <https://doi.org/10.1016/j.ijsp.2012.10.001>

<https://www.ijssurgery.com/content/7/e8>

This information is current as of May 17, 2025.

---

**Email Alerts** Receive free email-alerts when new articles cite this article. Sign up at:  
<http://ijssurgery.com/alerts>



## Multilevel extreme lateral interbody fusion (XLIF) and osteotomies for 3-dimensional severe deformity: 25 consecutive cases

Paul C. McAfee, MD, MBA \*, Erin Shucosky, RN, Liana Chotikul, RN, CRNP,  
Ben Salari, DO, Lun Chen, MD, Dan Jerrems, PA

*Spine and Scoliosis Center, University of Maryland, St. Joseph Medical Center, Towson, MD*

### Abstract

**Background:** This is a retrospective review of 25 patients with severe lumbar nerve root compression undergoing multilevel anterior retroperitoneal lumbar interbody fusion and posterior instrumentation for deformity. The objective is to analyze the outcomes and clinical results from anterior interbody fusions performed through a lateral approach and compare these with traditional surgical procedures.

**Methods:** A consecutive series of 25 patients (78 extreme lateral interbody fusion [XLIF] levels) was identified to illustrate the primary advantages of XLIF in correcting the most extreme of the 3-dimensional deformities that fulfilled the following criteria: (1) a minimum of 40° of scoliosis; (2) 2 or more levels of translation, anterior spondylolisthesis, and lateral subluxation (subluxation in 2 planes), causing symptomatic neurogenic claudication and severe spinal stenosis; and (3) lumbar hypokyphosis or flat-back syndrome. In addition, the majority had trunks that were out of balance (central sacral vertical line  $\geq 2$  cm from vertical plumb line) or had sagittal imbalance, defined by a distance between the sagittal vertical line and S1 of greater than 3 cm. There were 25 patients who had severe enough deformities fulfilling these criteria that required supplementation of the lateral XLIF with posterior osteotomies and pedicle screw instrumentation.

**Results:** In our database, with a mean follow-up of 24 months, 85% of patients showed evidence of solid arthrodesis and no subsidence on computed tomography and flexion/extension radiographs. The complication rate remained low, with a perioperative rate of 2.4% and postoperative rate of 12.2%. The lateral listhesis and anterior spondylolisthetic subluxation were anatomically reduced with minimally invasive XLIF. The main finding in these 25 cases was our isolation of the major indication for supplemental posterior surgery: truncal decompensation in patients who are out of balance by 2 cm or more, in whom posterior spinal osteotomies and segmental pedicle screw instrumentation were required at follow up. No patients were out of sagittal balance (sagittal vertical line  $< 3$  cm from S1) postoperatively. Segmental instrumentation with osteotomies was also more effective for restoration of physiologic lumbar lordosis compared with anterior stand-alone procedures.

**Conclusions:** This retrospective study supports the finding that clinical outcomes (coronal/sagittal alignment) improve postoperatively after minimally invasive surgery with multilevel XLIF procedures and are improved compared with larger extensile thoracoabdominal anterior scoliosis procedures.

© 2013 ISASS - International Society for the Advancement of Spine Surgery. Published by Elsevier Inc. All rights reserved.

*Keywords:* XLIF; Deformity; Scoliosis; Three column osteotomy

New technology and methods continue to push the limits of minimally invasive spine surgery. The benefits of new techniques have proved advantageous for both patients and surgeons. Shorter surgery times, decreased hospital stays, decreased tissue trauma and blood loss, decreased postoperative pain, and a shorter return to daily life are all reported advantages associated with minimally invasive spine surgery.<sup>1–4</sup>

In 2001 Pimenta<sup>5–8</sup> introduced an innovative minimally invasive spine surgery that accessed the anterior lumbar spine, using a lateral, transpoas approach. Ozgur et al.,<sup>9</sup> who later made the procedure popular in 2006, described a minimally disruptive spine procedure called the extreme lateral interbody fusion (XLIF) (NuVasive, Inc., San Diego, California). Through the XLIF procedure, access can be gained to the lumbar spine via a lateral approach that passes through the retroperitoneal fat and psoas major muscle.<sup>2</sup>

Unlike the traditional interbody fusions and approaches, the XLIF approach offers numerous advantages. A general surgeon is not required for access, the need to retract or violate the peritoneum is eliminated, and the approach

\* Corresponding author: Paul C. McAfee, MD, MBA, Towson Orthopaedic Associates, O'Dea Medical Arts Bldg, 7505 Osler Dr, Ste 104, Towson, MD 21204; Tel.: 410-337-8888; fax: 410-823-4833.

E-mail address: [spinefellows@gmail.com](mailto:spinefellows@gmail.com)

avoids mobilization of the great vessels, thereby avoiding the related risk of sexual dysfunction.<sup>10–13</sup> In comparison with anterior lumbar interbody fusion, the lateral approach offers safer access to the retroperitoneal space and disk space in patients who have had prior open abdominal surgery. When compared with transforaminal and posterior lumbar interbody fusion, the lateral approach allows a more complete discectomy, annulectomy, osteotomy, and insertion of a larger interbody device. XLIF also results in limited posterior paraspinal muscle dissection and helps to avoid epidural scar dissection during revision spinal fusion for post-laminectomy surgery. Postoperative standing 3-foot radiographic results have shown an improvement in the sagittal- and coronal-plane alignment of the spine.<sup>7,14–16</sup>

The indications for XLIF include symptomatic degenerative disk disease with instability, junctional lumbar degenerative disease (also known as adjacent segment disease or transitional zone disease), degenerative spondylolisthesis, recurrent disk herniation, degenerative scoliosis, and poor healing capacity of patients (eg, nicotine abuse, antiepileptic medication use, diabetes, chronic steroid use, and other medical comorbidities). The purpose of this study was to review our series of 25 multilevel XLIF cases (78 XLIF levels) requiring supplemental posterior surgery—pedicle screw instrumentation and posterior osteotomies.

The contraindications for XLIF include previous bilateral retroperitoneal surgery, pregnancy, radiation because of retroperitoneal scarring, or bony pathology that precludes fusion surgery such as osteopenia, osteopetrosis, chronic autoimmune disease, and steroid dependence.<sup>11,17,18</sup>

## Methods

### Outcomes assessment

Little published literature is available that significantly supports the use of XLIF as an effective treatment for lumbar spine deformity or other degenerative cases as compared with traditionally accepted techniques using more extensive anterior exposure.

This article reports on data compiled from a database that includes a total of over 300 patients who underwent an XLIF procedure from 1993 to 2010. The majority were stand-alone lateral procedures with lateral plates and/or anterior rods inserted for spinal stabilization. The main principle of XLIF is to perform an anterior spinal decompression and indirectly decompress the spinal canal by gradually restoring the disk space height. This serves to decompress symptomatic lumbar nerve roots by increasing the height of the neural foramen. There were particular cases in our series that had spinal stenosis symptoms from complex multiplanar lumbar deformity—a combination of spondylolisthesis, lateral listhesis, and scoliosis. A retrospective database of over 300 cases of XLIF performed at our institution was analyzed over the last 17 years.<sup>1,2,18</sup> A group of 25 patients fulfilled the following criteria: (1) a minimum of 40° of scoliosis; (2) 2 or more levels of translation, anterior spondylolisthesis, and lateral subluxation (subluxation in 2 planes), causing symptomatic neurogenic claudication and severe spinal stenosis; and (3) lumbar hypokyphosis or flat-back syndrome. In addition, the majority had trunks that were out of balance in



Fig. 1. Preoperative anteroposterior and postoperative radiographic views show a 53° degenerative scoliosis, disk space collapse, and neural foraminal narrowing from L1 to L5. Grade II subluxation laterally at L3 to the left of L4 with degenerative lateral listhesis is also seen at L3–4 with a rotatory component. The central sacral vertical line indicates that the patient's trunk is 2 cm out of balance toward the left compared with the coronal plumb line (case 5). The postoperative scoliosis correction was from 53° down to 7°.

Table 1  
Data for 25 consecutive cases

Case No.	Age (yr)	Classification	Preop diagnosis	Operative detail	No. of levels of XLIF spacers	Levels of spacers	Decompression laminectomy
1	67	Severe scoliosis + deformity, spondylosis	Lateral listhesis 2 cm out of balance, extreme claudication	XLIF cage + Armada (Nuvasive, San Diego, CA)	4	L1–5	L3, L4, L5
2	66	Severe scoliosis + deformity, spondylosis	Scoliosis, lateral listhesis, stenosis, instability	XLIF cage + Armada	4	L1–5	L3, L4, L5
3	76	Severe scoliosis + deformity, spondylosis	40° lumbar scoliosis, synovial cyst at L4–5	XLIF cages + Armada	3	L2–5	L3, L4, L5
4	55	Severe scoliosis + deformity, spondylosis	Spondylo at L4–5 + 42° scoliosis	XLIF cages + Armada	4	L1–5	L3, L4, L5
5	68	Severe scoliosis + deformity, spondylosis	48° scoliosis, GII L3/4 lateral listhesis, stenosis	XLIF cages + Armada	4	L1–5	L2, L3, L4, L5
6	69	Severe scoliosis + deformity, spondylosis	Grade I spondylolisthesis, post-laminectomy syndrome, lumbar scoliosis	XLIF cages + Armada	3	L2–5	L3, L4, L5
7	77	Scoliosis, spondylolisthesis + lateral subluxation	GI L4–5 spondylo	XLIF cage + Armada	3	L2–5	L4, L5
8	63	Post-laminectomy syndrome at L3, L4, L5	GI L3–4 and GII L4–5 spondylo + 40° scoliosis	XLIF cage + Armada	3	L2–5	L3, L4, L5
9	64	Scoliosis, spondylolisthesis + lateral subluxation	GI L4–5 spondylo	XLIF cages + Armada	3	L2–5	L3, L4, L5
10	48	Scoliosis, spondylolisthesis + lateral subluxation	L2 retrolisthesis, L3 by 1 cm	XLIF cages + percutaneous screws	2	L2–4	None
11	62	Scoliosis, spondylolisthesis + lateral subluxation	Scoliosis and L3–4 spondylo	XLIF cages + Revere (Globus Medical, Audubon, PA)	3	L2–5	L3, L4, L5
12	71	Prior VSP instrumentation	L2–3 and L4–5 retrolisthesis, 1 cm each	XLIF cages + Armada	4	L1–S1	L3, L4, L5
13	71	Degenerative scoliosis	Scoliosis and L3–4 spondylo	XLIF cage + Armada	3	L1–5	L4, L5
14	78	Post-laminectomy syndrome and prior VSP at L3–5	L1–2 retrolisthesis and L2–3 retrolisthesis	XLIF cage + Armada	2	L1–5	L3, L4, L5
15	41	Post-laminectomy syndrome and prior CD at L4–S1	Spondylo at L5–S1 and scoliosis	XLIF cages + Armada	2	L2–S1	L4, L5
16	68	Scoliosis, spondylolisthesis + lateral subluxation	Scoliosis and lateral listhesis at L2–3 and L4–5	XLIF cages + Armada	3	L1–5	L3, L4, L5
17	66	Scoliosis, spondylolisthesis + lateral subluxation	Scoliosis and L3–4 lateral, L2–3 1-cm retrolisthesis, OOB	XLIF cages + Armada	4	L1–S1	L3, L4, L5
18	64	Scoliosis, spondylolisthesis + lateral subluxation	Scoliosis on right side	XLIF cages + Armada	3	L2–5	L3, L4, L5
19	61	Scoliosis, spondylolisthesis + lateral subluxation	Retrolisthesis at L4–5 and scoliosis	XLIF cage + Armada	3	L2–5	L4, L5
20	73	Post-laminectomy syndrome at L3, L4, L5	Scoliosis + stenosis	XLIF cage + Armada	3	L2–5	L4, L5
21	62	Scoliosis, spondylolisthesis + lateral subluxation	GI L2–3 and L4–5 spondylo + scoliosis	XLIF cages + Armada	3	L2–5	L3, L4, L5
22	67	HNP at T12–L1 and adjacent segment with instrumentation	GII retrolisthesis at L2–3 and HNP at T12–L1	XLIF cages + Armada	3	T12–L3	L2, L3, L4, L5
23	72	Scoliosis, spondylolisthesis + lateral subluxation	L3–4 subluxation, post-laminectomy syndrome	XLIF cages + Armada	4	T12–L5	L3, L4, L5
24	68	Scoliosis, spondylolisthesis + lateral subluxation	Degenerative scoliosis	XLIF cages + Armada	3	L2–5	L3, L4, L5
25	70	Scoliosis, spondylolisthesis + lateral subluxation	Post-laminectomy syndrome	XLIF cages + Armada	2	L2–4	L3, L4, L5
Mean	65.9				3.12		

Abbreviations: GI, grade I; GII, grade II; Postop, postoperative; Preop, preoperative; CD, Cotrel Dubousset; HNP, Herniated Nucleus Pulposus; OOB, out of bed; VAP, variable spinal plate.

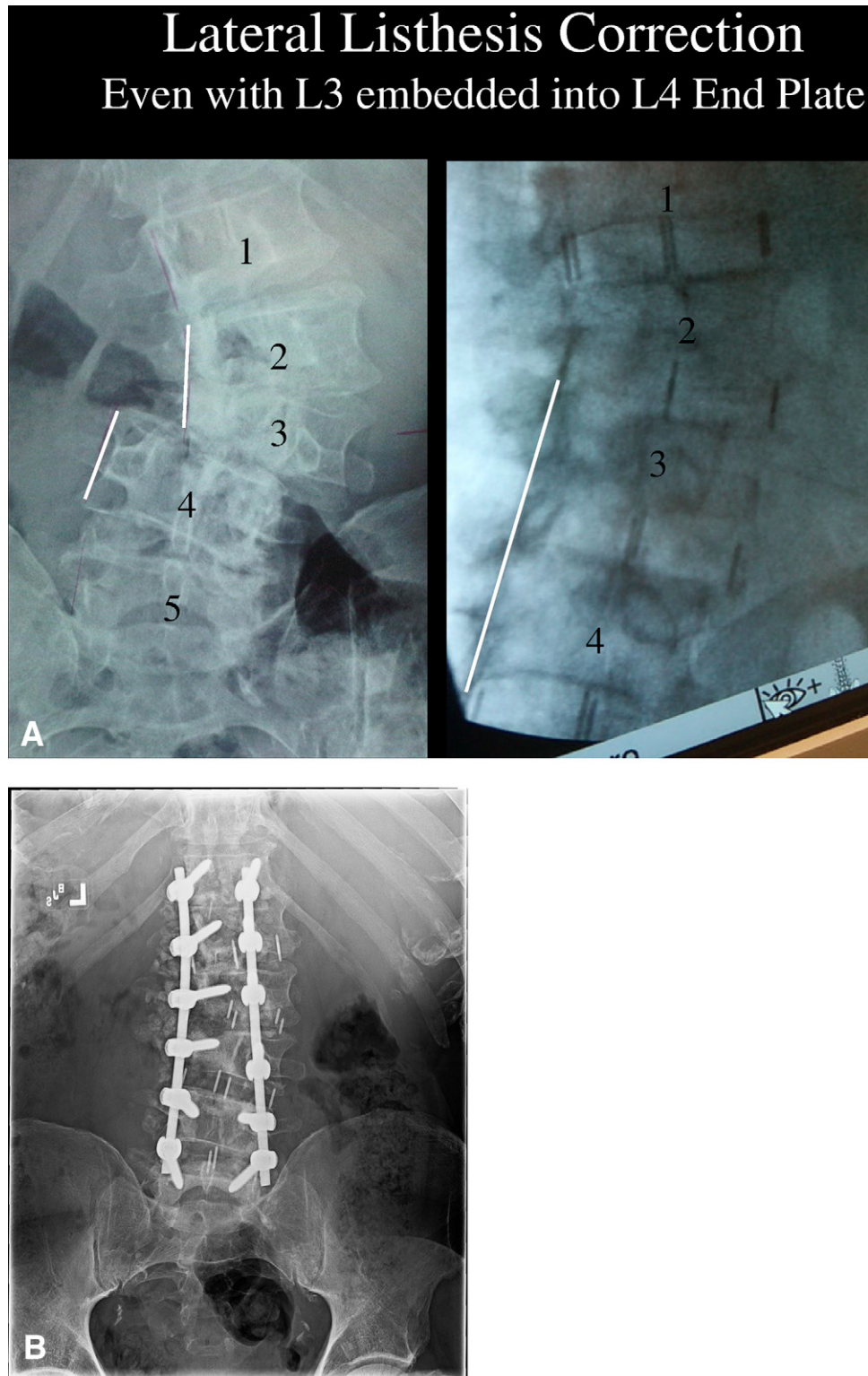
Table 1  
Continued

Levels of posterior instrumentation	Lateral listhesis	Preop scoliosis (°)	Postop scoliosis	Preop OOB (cm)	Postop OOB	Mean length of hospital stay (d)	Mean blood loss (cc)	Length of surgery (min)	Preop VAS score	Postop VAS score
T12–L5	GII L3 to right of L4	47	5	2	0	6	3100	378	80	5
L1–5	GII L3 to left of L4	40	6	2	0	13	3600	393	85	3
L2–5	GI L4 to left of L5	40	3	3	0	4	900	234	60	7
L1–5	GI L3 to left of L4	42	4	3	0	7	1700	337	90	0
T12–L5	GII L3 to left of L4	48	7	3	0	4	600	266	60	5
L1–5	GI L3 to right of L4	40	5	2	0	7	900	325	90	10
L2–5	GI L4–5 anterior and lateral	42	4	2	0	3	600	130	90	30
L1–5	GI L3–4 lateral, GI L4–5 lateral	55	15	5	0	4	800	259	80	10
L2–5	GI L4–5 anterior and lateral	40		2	0	9 (reoperation on day 5)	1100	268	90	30
L2–5	L2–3	40	0	2	0	4	150	192	90	20
L2–5	L4–5 1 cm	43	6	2	0	3	1700	315	100	10
L1–S1	L4–5 GI	41	3	2	0	3	50	120	60	40
L1–5	L3 right of GI L4	43	8	0	0	4	1500	278	60	40
L1–5	GI L1–2 and L2–3	40	0	2	0	5	350	143	90	20
L2–5	L2–3 + L3–4	40	4	2	0	3	50	75	80	60
L1–5	GI L-3, L3–4, and L4–5	48	10	2	0	5	550	377	60	0
L1–S1	GII L3–4	40	8	4	0	4	1100	344	70	80
L2–5	L2–3	42	0	2	0	7	700	218	100	50
L2–5	Retrolisthesis and lateral at L2–3 + L4–5, 1 cm each	45	10	2	0	3	600	136	90	30
L2–5	L3–4	40	0	2	0	7	750	201	90	70
L2–5	L4–5	40	5	2	0	3	500	150	40	80
T11–L5	GII retrolisthesis at L2–3	43	2	2	0	4	650	242	70	30
L2–5	GII L3–4	53	10	5	2	4	1400	263	90	50
L2–5	L4–5	40	4	2	0	4	300	143	30	0
L2–5	Retrolisthesis and lateral subluxation L3–4	41	3	2	0	3	300	123	100	80
		42.9	5.08	2.32	0.08	4.75	958	236	77.8	30.4

the coronal plane (distance between plumb line and central sacral vertical line  $>2$  cm from midline) or sagittal imbalance, defined by a distance between the sagittal vertical line (SVL) and S1 of greater than 3 cm.

There were 25 patients who had severe enough deformities fulfilling these criteria in whom supplementation of the lateral

XLIF with posterior osteotomies and pedicle screw instrumentation was required (Fig. 1). The mean age of the 25 patients was 65.9 years (range, 41–78 years). They had a minimum of 3 contiguous lumbar spinal levels with XLIF, ranging up to 5 levels. The posterior instrumentation ranged from 4 to 6 levels, with a mean of 4.52 levels—the vertebral levels of posterior



instrumentation and fusion always spanned, at a minimum, the intervertebral disk spaces with XLIF spacers.

At follow-up, most patients had computed tomography (CT) scans and all patients had flexion/extension radiographs to review so that we could assess the progress of fusion. The number of levels treated, procedural complications, mean operative time, mean estimated blood loss, mean length of hospital stay, perioperative complications, and postoperative complications were all assessed when reviewing records. The indications included in the multilevel XLIF series were deformity (spondylosis, spondylolisthesis, and scoliosis), adjacent segment disease, and lumbar nerve root compression reflected by severe neurogenic claudication.

### XLIF technique

The XLIF approach requires the necessary understanding of anatomy and appropriate positioning of the patient. All cases fulfill the definition of minimally invasive surgery as defined in our prior publication.<sup>1</sup> During dissection, a 1-incision technique less than 4 cm in length is recommended and caution should be exercised to ensure that it does not extend anteriorly to put the peritoneal contents and abdominal vascular structures at risk. Our preference is to perform the XLIFs on the concave side of the scoliosis with the hinge in the radiolucent table flexed opposite the curve to help reduce the scoliosis. This also serves to open up the disk spaces and provide easier access. We always start at the L4–5 level and work successively more proximally up to either L2–3 or L1–2. A dissection that strays too far posteriorly can cause risk to the neural foramen and exiting nerve roots. It is recommended that real-time, dynamic, and discrete neurologic monitoring be used during the procedure to ensure that the lumbar plexus is protected (Neurovision; NuVasive, Inc.).<sup>7,19,20</sup> Running electromyography is performed throughout the decompression to ensure that the nerve roots are decompressed and also ensure that the lumbar plexus is not stretched or compromised during the lateral dissection through the psoas major muscle. Our initial dissection through the psoas is in zone 2.<sup>14,19,21</sup> Axial images on the magnetic resonance imaging/CT scanner should be reviewed preoperatively to observe neural structures at the operative level(s) and to confirm that abdominal vessels do not obstruct the lateral disk space. Intraoperative fluo-

roscopy is used throughout the dissections—the C-arm needs to be constantly repositioned as the scoliosis is reduced, and the imaging beam needs to stay orthogonal to the vertebral end plates. The rotational deformity is corrected with Cobb elevators, which release the contralateral marginal vertebral body osteophytes. The osteotomies and anterior reduction essentially comprise a lateral adaptation of the spondylolisthesis reduction technique described by Bradford and Steffee using a “spinal persuader.”<sup>14,22</sup>

After closure of the lateral multilevel XLIF approach, fluoroscopy images characteristically show good reduction of the scoliosis and spondylolisthesis but not the sagittal imbalance or the lumbar hypokyphosis. The patient is now positioned in the prone position, and standard open lumbar decompression with Smith-Peterson closing wedge osteotomies at each XLIF level is performed. In our experience this is the only way to correct (1) trapezoid-shaped vertebral bodies in the apex of the curve, (2) lumbar hypokyphosis, and (3) global imbalance with an SVA of 2 cm or more. In this series autograft and Osteocel (NuVasive, Inc.) were used as the biologics of choice for arthrodesis. Bone morphogenic protein 2 or INFUSE (Medtronic, Inc., Minneapolis, Minnesota) was not used for any procedures.

### Results

Twenty-five cases were found that fulfilled the multiplanar deformity criteria outlined earlier. These 25 cases had undergone 3- or 4-level XLIF, anterior and posterior osteotomies, and posterior pedicle screw instrumentation. The patients presented with severe neurogenic claudication preventing ambulation. Each had 3-dimensional deformities in 2 planes (coronal- and sagittal-plane deformities) with 40° or more of lumbar scoliosis, axial rotation, and a minimum of grade I (25%) lateral or anterior spondylolisthesis (Table 1) with global imbalance.

The neurogenic claudication resolved in all cases. The mean preoperative scoliosis was 42.9° (range, 40°–55°), and this improved to 5.08° at follow-up (range, 0°–15°). No patients were out of coronal balance at final follow-up, aside from case 23, whose SVA was 2 cm. The mean operative time was 236 minutes (range, 75–393 minutes), and the mean estimated blood loss was 958 cc (range, 50–3600 cc).

Fig. 2. Lateral listhesis correction is possible with minimally invasive multiple-level XLIF. Even with the L3 vertebra embedded within the superior end plate of L4, this grade II lateral listhesis was reduced with the first-stage XLIF. The major reduction techniques include hinging the operating table such that the patient is bent toward the convexity, complete circumferential annulotomy, and XLIF performed from the concave side. In contrast to open traditional anterior scoliosis procedures, which are approached from the convex side, multilevel XLIF is performed from the concave side. Even the most severe cases of lateral listhesis can be corrected via the concave side. The trajectory to each of the L1–2, L2–3, L3–4, and L4–5 disks can be reached through a minimally invasive surgery incision 5 cm or shorter in length. Preoperative axial magnetic resonance imaging views showed severe stenosis at L3–4 with compression of the thecal sac, severe ligamentum flavum hypertrophy, and facet arthropathy, which were corrected through XLIF. However, a synovial cyst and soft-tissue compression of the nerve roots need to be directly decompressed through a posterior approach. (A) Correction of a coronal decompensation of 2 cm or more and sagittal decompensation of 10 cm or more needs to be achieved with posterior instrumentation. (B) Standing anteroposterior radiograph of same patient at follow-up. The pedicle orientation on the right side at L3 and L4 is now collinear, whereas in A, the right L3 pedicle is the oblique typical Scotty dog profile. It would require multiple postoperative CT cuts through the vertebra at different angles to quantitate the derotation more precisely, but the important point clinically is that the symptoms of radiculopathy from pedicular kinking of the convex apical nerve roots were alleviated. This 67-year-old man's neurogenic claudication was dramatically relieved postoperatively, and he could walk upright for extended periods.

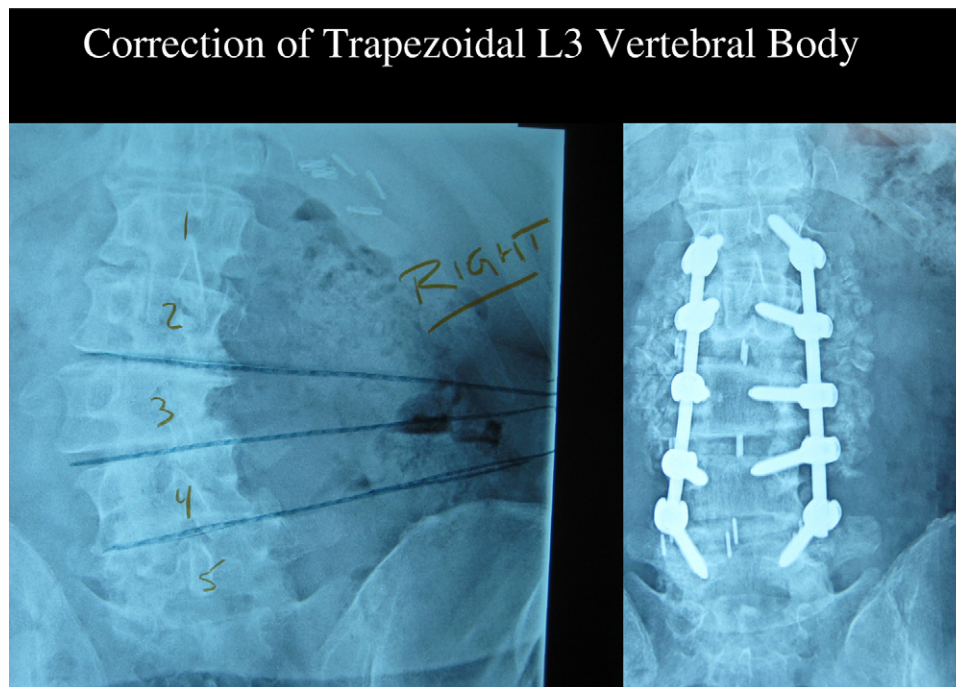


Fig. 3. Correction of an L3 trapezoid-shaped vertebral body also needs to be performed by posterior shortening with multilevel osteotomies. Supplemental posterior osteotomies and pedicle screw instrumentation were necessary to restore 40° of physiologic lumbar lordosis.

The mean length of hospital stay was 4.75 days (range, 3–8 days). The preoperative visual analog scale (VAS) score for leg pain was 77.8, and this improved to 30.4 at follow-up. The mean follow-up was 24.6 months.

Some previous investigators have measured disk space and neural foraminal height from preoperative and postoperative radiographs, but we do not believe that these measurements are reliable without both preoperative and postoperative high-resolution multiplanar CT imaging, thought to be too expensive and not justified for this study. The best evidence for accurate reduction of rotational plane abnormalities was to confirm derotation of the ipsilateral pedicles on the convex side of the scoliosis just below the apex. In Fig. 1 this is the left L3 and L4 pedicles on the left image. On the post-instrumentation standing radiograph on the right side, it should be noted that the left L3 pedicle and the left L4 pedicle are almost collinear and the “Scotty dog” oblique profile of the left L3 pedicle has a markedly improved orientation postoperatively. In a similar fashion, the malrotation in the transverse plane can be confirmed in Fig. 2 by observing the disappearance of the Scotty dog profile of the right L3 pedicle compared with the right L4 pedicle just below.

#### Complications

One patient (patient 6) had an incidental durotomy during the procedure, which was repaired with No. 4-0 Nurolon suture (Ethicon, Somerville, NJ) and monitored for cerebrospinal fluid leakage postoperatively. Case 9 was a 64-year-old woman who had progressive weakness on the fifth

postoperative day because of an epidural hematoma. This was emergently surgically explored and was decompressed. She successfully regained normal neurologic function with no long-term neurologic sequelae. There were no cases of cage migration or clinically relevant polyetheretherketone spacer subsidence.<sup>23</sup>

The incidence of neurologic complication that we experienced mirrors that of the prospective randomized trial of Isaacs et al.,<sup>15</sup> a prospective nonrandomized trial of 107 patients. Eighty percent of patients had transient proximal ipsilateral thigh weakness due to passage of retractors through the psoas muscle (Fig. 3). Isaacs et al. defined major neurologic weakness as weakness that either did not resolve by the 6-month postoperative visit or was decreased by more than 2 grades at any point (7 of 107 patients [6.5%] in their series). In our series of 25 consecutive patients, we encountered 2 patients, cases 17 and 18, with residual quadriceps weakness persisting for more than 6 months (2 of 25 [8%]). The patients were ambulatory in a modified knee immobilizer. We also encountered 2 additional patients with pseudoparesis of the abdominal wall due to neurapraxia of the twelfth intercostal nerve. This caused the lower abdominal wall to bulge but was more of a cosmetic than a functional limitation.

#### Discussion

Historically, the 3 major anterior instrumentation procedures for correction of scoliotic deformities have involved an extensile exposure directed toward the convex side of the



Table 2  
Side of surgical approach for lumbar scoliosis

Consideration	Convex	Concave
Proponents	Dwyer, Zielke, Kaneda	McAfee, Pimenta, Akbarnia
Distance from spine to skin	Apex of curve is closer to skin incision	Concave bridging osteophytes are closer to skin incision
Size of approach	More “extensile” due to diverging direction of disk spaces	Minimally invasive surgery due to converging pointing of disk spaces (Fig. 6)
OR positioning	Flat lateral decubitus Hinging OR table accentuates deformity	Hinged radiolucent table OR table assists reduction of scoliosis and lateral subluxation
Bridging osteophytes	Key area requiring osteotomies are on contralateral side of disk space	Ipsilateral disk space Direct vision
Instrumentation	Instrumentation is on “tension” side of scoliotic curvature so rods bear correction force	Load-bearing PEEK implants with large footprint maintain correction—spacers counteract compression
Ideal curve	More useful in thoracolumbar spine (apex T12 or L1) due to production of kyphosis	Lumbar curves (apex L2 + below), more effective restoration of lumbar lordosis

Abbreviations: OR, operating room; PEEK, polyetheretherketone.

lumbar curvature—Dwyer, Zielke, and Kaneda. The advantages of an approach to the convex side of a scoliotic curvature are as follows: (1) the apex of the curve is rotated closer to the skin incision, making the spine more superficial; (2) the intervertebral disk spaces are wedged open wider toward the surgeon; and (3) the lumbar plexus and great vessels are situated more deeply toward the contralateral side (Table 2). The major disadvantage of the convex approach is that the major structures requiring release of the deformity are the osteophytes and bridging bone on the concave side of the curvature. In degenerative scoliosis there are usually bridging osteophytes and heterotopic bone along the narrowed disk spaces on the concave side. To resect these osteophytes and perform anterior osteotomies,

the concave approach provides a closer exposure and more direct vision (Fig. 4). For the most part, the restoration of disk space and neural foraminal height is dependent on sequential spreading of the concave side of the disk spaces. To gain the advantages of the concave approach, the surgical technique requires neural monitoring and surveillance of the lumbar plexus to avoid postoperative neurapraxia. The concave approach allows more thorough resection of the disk and osteophyte syndesmophytes on the concave side of the curve. It also allows more direct insertion of load-bearing spacers within the disk space to maintain correction. The convex procedures are directed at the tension side of the curve; therefore the instrumentation compresses the vertebral bodies together in tension, which can result in un-



Fig. 4. Multiple-level XLIF with supplemental posterior instrumentation reduced the scoliotic deformity from 47° down to 5°, and the grade II L3–4 lateral listhesis was also well corrected. The combined 3-dimensional deformity correction added over 3 cm of lumbar height.

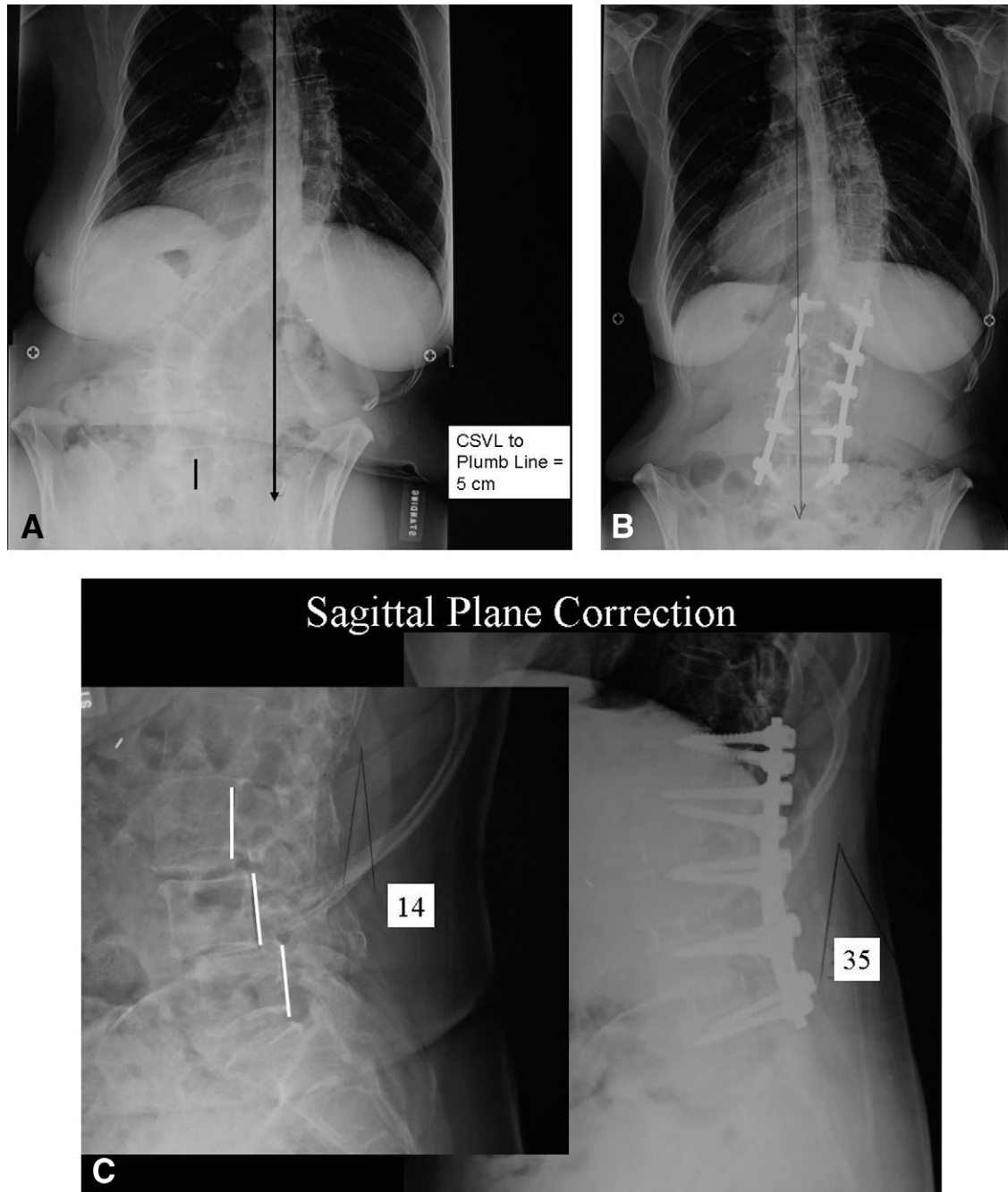


Fig. 5. Case 8. (A) A 63-year-old woman presented with a  $55^\circ$  lumbar scoliosis, grade I L3–4 spondylolisthesis, and grade I L4–5 spondylolisthesis, and the central sacral vertical line (CSVL) distance to the vertical plumb line equaled 5 cm. (B) Postoperatively, the patient's sagittal vertical plumb line directly bisected her pelvis. Her scoliosis has been corrected to  $15^\circ$ . (C) Her lumbar lordosis of  $14^\circ$  was corrected to  $35^\circ$ .

wanted lumbar kyphosis. The insertion of load-bearing spacers spanning from ring apophysis to contralateral ring apophysis from the concave side of the scoliosis allows for more effective lordotic correction (Fig. 5). The spacers also serve to increase neural foraminal height to alleviate spinal stenotic leg pain.

A clear exposure advantage is afforded by the concave side because the lumbar intervertebral disks all point toward a converging area on the concavity of the patient's flank. In contrast, the intervertebral disks and end plates on the con-

vex side diverge, and if orthogonal line of sight is required for discectomy and osteotomy, a less minimally invasive approach is required (Fig. 6).

The third major exposure advantage to approaching a scoliosis from the side is that the operating table can be hinged with the patient in the lateral position. Bending the incision open if the convex side is up serves to increase the deformity. On the other hand, hinging open the operating table with the concavity in the upward direction serves to reduce the scoliosis (same mechanism as a side-bending radiograph), and the table

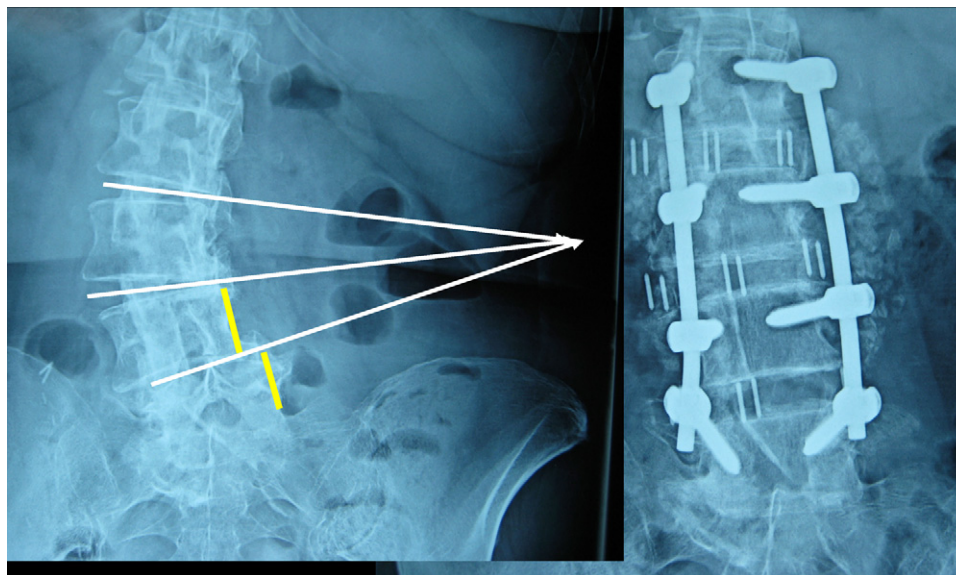


Fig. 6. Case 3. The preoperative and postoperative lumbar radiographs show effective correction of both the lateral L4–5 listhesis and the 40° lumbar scoliosis using 3-level XLIF and L2–5 posterior instrumentation and fusion. One should note the convergence, or “pointing,” of the scoliotic disk spaces toward a confined area on the concave flank—this provides for a more minimally invasive surgery than the historical convex “extensile” approach.

positioning helps reduce any subluxation present in the lower L3–4 and L4–5 levels. The lateral osteotomies resecting the concave bridging osteophytes can be more readily accessed and addressed under direct vision from the concavity in an adult degenerative scoliosis. The 3 technical features that facilitate the evolution of deformity surgery are (1) Neurovision with hunting algorithms and step-wise running electromyographic surveillance; (2) operative positioning on a radiolucent table capable of hinging (Jackson Lateral Access Table, MIZUHO OSI, Union City, CA), which assists in deformity reduction, before the skin incision is even made; and (3) much larger intervertebral load-bearing polyetheretherketone spacers with rectangular footprints that can be inserted from the concave side (50–60 mm in length and 22–28 mm in width).

The published literature supports an improvement and maintenance in lumbar lordosis, as well as sagittal and coronal alignment, after an XLIF procedure.<sup>5–8,15,17</sup> Kepler et al.<sup>22</sup> reported a 3.6° increase in mean lordosis at each instrumented level at 1-year follow-up. Rodgers et al.<sup>21</sup> found that the coronal angle was significantly corrected from 24.3° to 12.9° and maintained at the 1-year follow-up. Sagittal angles were also maintained through the 6-month follow-up period from 16° preoperatively to 25° postoperatively. Tormenti et al.<sup>20</sup> conducted a study in which patients underwent a transpsoas procedure with posterior instrumented fusion versus posterior-only correction using transforaminal or posterior lumbar interbody fusion technology. At a mean follow-up of 10.5 months, the study results found that the combined lateral transpsoas and posterior procedure had a mean curve correction of 70.2% and a mean Cobb angle of 10°, which had decreased from 38.5° preoperatively. The posterior-only group was found to only

have a mean curve correction of 44.7% and a mean Cobb angle of 11°, which had decreased from 19°.

Positive conclusions could be drawn that the XLIF procedure results in postoperative improvement in VAS scores.<sup>1,7,14,15,17,22,24</sup> Specifically, Pimenta et al.<sup>7</sup> reported VAS scores averaging from 8.33 at preoperatively to 3.16 at the 2-year follow-up (10 point scale) whereas Oswestry Disability Index scores increased from a mean of 51.2 preoperatively to 27.3 (100 point scale). At a mean follow-up of 11 months, Dakwar et al.<sup>19</sup> observed a 5.7-point improvement in VAS scores and a 23.7% increase in Oswestry Disability Index scores.

Much of the literature found on XLIF focuses on complications perioperatively and postoperatively, along with the radiographic results. The complications reported to be associated with XLIF included subsidence, hardware failure, transient lateral thigh weakness, cage migration, anterior longitudinal ligament rupture, permanent femoral injury, bowel perforation, infection, pulmonary embolism, durotomy, hemodynamic instability, pleural effusion, vertebral body fractures, pseudarthrosis, and dysesthesia.<sup>2,3,7,19,21,23</sup> The complications remained minimal in our series and did not adversely influence the neurologic outcome<sup>5</sup> at follow-up. Smith and Malone<sup>13</sup> focused on a large number of patients at a single site to determine the occurrence rate for complications. The greatest percentage of complications was attributed to transient lateral thigh weakness, 100% of which resolved by 6 to 12 weeks after surgery. Fewer than 1% of the complications reported in the study were due to intra-psoas nerve damage.<sup>13,15</sup>

The objective of minimally invasive surgery is to decrease dissection- and approach-related muscle trauma, decrease blood loss, decrease length of hospital stay, and

Table 3  
Two major types of adult scoliosis

Adult idiopathic scoliosis	Adult degenerative scoliosis (de novo scoliosis)
Younger age at presentation	De novo scoliosis develops in 68% of adults aged >60 yr (Schwab et al. <sup>24</sup> )
Can have associated congenital elements	Disk space collapse, vertebral wedging
Disk space height maintained	Facet degeneration
Thoracolumbar scoliosis (apex T12 or L1)	Lumbar scoliosis (apex L2 or below)
SRS definition	
Mechanical back pain predominates	Radiculopathy and claudication
Pedicular kinking and stretching of nerve roots	Direct nerve root compression from spinal stenosis (magnetic resonance imaging required)
Rotational deformity more pronounced	Rotary subluxation more prominent
Translation unusual	Spondylolisthesis and lateral subluxation particularly at L3–4 and L4–5 are characteristic
Coronal-plane deformity predominates	Multiplanar 3-dimensional deformity (coronal, sagittal, and transverse)
More apt to extend into thoracic spine	Usually confined to lumbar spine as degenerative disk disease is more extensive
Usually develops in absence of prior surgery	Often associated with post-laminectomy syndrome due to prior degenerative changes
Approach on convex side	Approach on concave side

SRS, Scoliosis Research Society.

promote early mobilization of patients.<sup>1</sup> Our data suggest that with the XLIF approach in treating lumbar spine deformity, patients with deformity in 1 plane can have effective reduction with stand-alone anterior XLIF and anterior instrumentation.<sup>2</sup> However, if a patient has a combined 3-dimensional deformity such as combined lateral subluxation and multiple-level rotational scoliosis, this requires posterior supplemental decompression and pedicle screw stabilization (Table 3). All 25 of our cases had intraoperative radiographs after the anterior XLIF procedures but before the second stage. The lateral listhesis and the anterior listhesis were reduced, but with combined deformities, the lumbar lordosis was not optimally corrected. The posterior approach provided a more thorough canal decompression of soft tissue and allowed posterior column shortening by facet resection and posterior osteotomies, mainly through Smith-Peterson osteotomies. The addition of posterior pedicle screw instrumentation further enhanced the stabilization, evidenced by the reduction of lumbar scoliosis to less than 15° in 25 consecutive cases.

## Conclusion

The XLIF minimally invasive approach offers numerous benefits over traditional anterior procedures to the lumbar spine. Some of these include the following: not requiring a general access surgeon, not requiring retraction or violation of the peritoneum, eliminating the need for mobilization of the great vessels, and preserving the anterior and posterior longitudinal ligaments.<sup>5,18,22</sup> Although complications of XLIF are not insignificant and have been the focus in the literature, they remained minimal in our group of patients, considering the magnitude of the deformities and degree of preoperative stenosis. The data presented in this article parallel those from the published studies concerning less severe deformities that used the XLIF procedure to obtain disk space height correction. We achieved, on average, 88% correction of the scoliotic deformity and improvement in VAS scores by 64%. Thus we have shown the

effectiveness of XLIF in combination with posterior pedicle screw stabilization to correct 3-dimensional lumbar spinal deformities.

## References

- McAfee PC, Garfin SR, Rodgers WB, Allen RT, Phillips F, Kim C. An attempt at clinically defining and assessing minimally invasive surgery compared with traditional “open” spinal surgery. *SAS J* 2011;5:125–30.
- McAfee PC, Shucosky E, Chotikul L. Anterior MIS rod instrumentation with XLIF deformity, techniques and results. Presented at the Society of Lateral Access Surgeons Annual Meeting, San Diego, CA June 2011.
- Mundis GM, Akbarnia BA, Phillips FM. Adult deformity correction through minimally invasive lateral approach techniques. *Spine* 2010;35(Suppl):S312–21.
- Wiesel SW, Cuckler JM, Deluca F, Jones F, Zeide MS, Rothman RH. Acute low back pain. An objective analysis of conservative therapy. *Spine* 1980;5:324–30.
- Pimenta L. Lateral endoscopic transpoas retroperitoneal approach for lumbar spine surgery. Presented at the Eighth Brazilian Spine Society Meeting, Belo Horizonte, Brazil, 2001.
- Pimenta L, Díaz RC, Guerrero LG. Charité lumbar artificial disc retrieval: Use of a lateral minimally invasive technique. *J Neurosurg Spine* 2006;5:556–61.
- Pimenta L, Lhamby J, Gharzedine I, et al. XLIF approach for the treatment of adult scoliosis: 2-Year follow-up. *Spine J* 2007;7:52S–53S.
- Pimenta L, Oliveira L, Coutinho E, et al. Minimally invasive surgery for degenerative scoliosis. *Spine J* 2009;9:131S.
- Ozgun BM, Aryan HE, Pimenta L, Taylor WR. Extreme lateral interbody fusion (XLIF): A novel surgical technique for anterior lumbar interbody fusion. *Spine J* 2006;6:435–43.
- Benglis DM, Vanni S, Levi AD. An anatomical study of the lumbosacral plexus as related to the minimally invasive transpoas approach to the lumbar spine. *J Neurosurg Spine* 2009;10:139–44.
- Hyde JA. Clinical application: Degenerated/collapsed disc. In: Goodrich JA, Volcan JJ, eds. *eXtreme Lateral Interbody Fusion (XLIF)*. St Louis, MO; QMP Publishing; 2008:127–42.
- Leary SP, Regan JJ, Lanman TH, Wagner WH. Revision and explanation strategies involving the Charité lumbar artificial disc replacement. *Spine* 2007;32:1001–11.
- Smith W, Malone K. Complications in extreme lateral interbody fusion: One surgeon’s experience with 566 patients and 1550 levels. *Spine J* 2009;9:178S–179S.

14. Akbarnia B, Varma V, Bess S, et al. Extreme lateral interbody fusion (XLIF) safely improves segmental and global deformity in large adult lumbar scoliosis: Preliminary results on 13 patients. Presented at the 15th Annual Meeting of International Meeting of Advanced Spine Technologies, Hong Kong, July 2008.
15. Isaacs RE, Hyde J, Goodrich JA, Rodgers WB, Phillips FM. A prospective, nonrandomized, multicenter evaluation of extreme lateral interbody fusion for the treatment of adult degenerative scoliosis: Perioperative outcomes and complications. *Spine* 2010;35(Suppl):S322–30.
16. Rodgers WB, Tohmeh A, Hyde J, et al. A prospective, multi-center, non-randomized evaluation of XLIF in the treatment of adult scoliosis: Mid-term radiographic outcomes. *Spine J* 2009;9:156S–157S.
17. Diaz R, Phillips F, Pimenta L. XLIF for lumbar degenerative scoliosis: Outcomes of minimally invasive surgical treatment out to 3 years postoperatively. *Spine J* 2006;6:75S.
18. Youssef JA, McAfee PC, Patty CA, et al. Minimally invasive surgery: Lateral approach interbody fusion: Results and review. *Spine* 2010;35(Suppl):S302–11.
19. Dakwar E, Cardona RF, Smith DA, Uribe JS. Early outcomes and safety of the minimally invasive, lateral retroperitoneal transpoas approach for adult degenerative scoliosis. *Neurosurg Focus* 2010;28:E8.
20. Tormenti MJ, Maserati MB, Bonfield CM, Okonkwo DO, Kanter AS. Complications and radiographic correction in adult scoliosis following combined transpoas extreme lateral interbody fusion and posterior pedicle screw instrumentation. *Neurosurg Focus* 2010;28:E7.
21. Rodgers WB, Cox CS, Gerber EJ. Early complications of extreme lateral interbody fusion in the obese. *J Spinal Disord Tech* 2010;23:393–7.
22. Kepler C, Sharma A, Huang RC, et al. Correction of sagittal and coronal plane degenerative lumbar deformity using the extreme lateral interbody fusion (XLIF) technique. *Spine J* 2009;9:59S.
23. Daffner SD, Wang JC. Migrated XLIF cage: Case report and discussion of surgical technique. *Orthopedics* 2010;33:518.
24. Schwab FJ, Ashok D, Lorenzo G, et al. Adult scoliosis prevalence, SF-36, and nutritional parameters in an elderly volunteer population. *Spine* 2005;30:1082–5.